



US009750598B2

(12) **United States Patent**
Hsu et al.

(10) **Patent No.:** **US 9,750,598 B2**
(45) **Date of Patent:** **Sep. 5, 2017**

(54) **BIOCOMPATIBLE AND BIODEGRADABLE ELASTOMER**

(71) Applicant: **National Taiwan University**, Taipei (TW)

(72) Inventors: **Shan-hui Hsu**, Taipei (TW); **Kun-Che Hung**, Taipei (TW); **Shenghong A. Dai**, Taipei (TW); **Chun-Yi Lu**, Taipei (TW)

(73) Assignee: **National Taiwan University**, Taipei (TW)

(*) Notice: Subject to any disclaimer, the term of this patent is extended or adjusted under 35 U.S.C. 154(b) by 0 days.

(21) Appl. No.: **14/145,393**

(22) Filed: **Dec. 31, 2013**

(65) **Prior Publication Data**

US 2014/0194533 A1 Jul. 10, 2014

(30) **Foreign Application Priority Data**

Jan. 2, 2013 (TW) 102100076

- (51) **Int. Cl.**
- A61L 27/18* (2006.01)
 - A61L 27/52* (2006.01)
 - C08G 18/40* (2006.01)
 - C08G 18/42* (2006.01)
 - C08G 18/75* (2006.01)
 - A61F 2/06* (2013.01)
 - A61L 27/58* (2006.01)
 - A61L 27/16* (2006.01)
 - A61L 27/38* (2006.01)
 - A61L 27/50* (2006.01)
 - A61L 27/54* (2006.01)
 - A61L 27/56* (2006.01)

(52) **U.S. Cl.**
CPC *A61F 2/06* (2013.01); *A61L 27/165* (2013.01); *A61L 27/38* (2013.01); *A61L 27/50* (2013.01); *A61L 27/507* (2013.01); *A61L 27/54* (2013.01); *A61L 27/56* (2013.01); *A61L 2400/08* (2013.01)

(58) **Field of Classification Search**
CPC *A61F 2/06*; *A61L 2400/08*; *A61L 27/165*; *A61L 27/38*; *A61L 27/50*; *A61L 27/507*; *A61L 27/54*; *A61L 27/56*
See application file for complete search history.

(56) **References Cited**

U.S. PATENT DOCUMENTS

- 4,098,743 A * 7/1978 Scriven C08G 18/0819 524/590
- 6,177,523 B1 * 1/2001 Reich C08G 18/10 525/450
- 2008/0262613 A1 * 10/2008 Gogolewski 623/11.11

* cited by examiner

Primary Examiner — Anna Falkowitz

(74) *Attorney, Agent, or Firm* — WPAT, P.C., Intellectual Property Attorneys; Anthony King

(57) **ABSTRACT**

The present invention provides a biocompatible and biodegradable elastomer, comprising a hard segment and a soft segment. The hard segment is formed by reacting diisocyanate and a chain extender; and the soft segment is comprising a biodegradable oligomer diol, wherein the biodegradable oligomer diol is selected from the group consisting of polycaprolactone diol, polyethylene butylene adipate diol (PEBA diol), poly-L-lactic acid diol (PLLA diol), polylactic acid diol and any combination thereof. The biocompatible and biodegradable elastomer of present invention can be used to produce vascular graft, cell carrier, drug carrier or gene carrier.

21 Claims, 19 Drawing Sheets

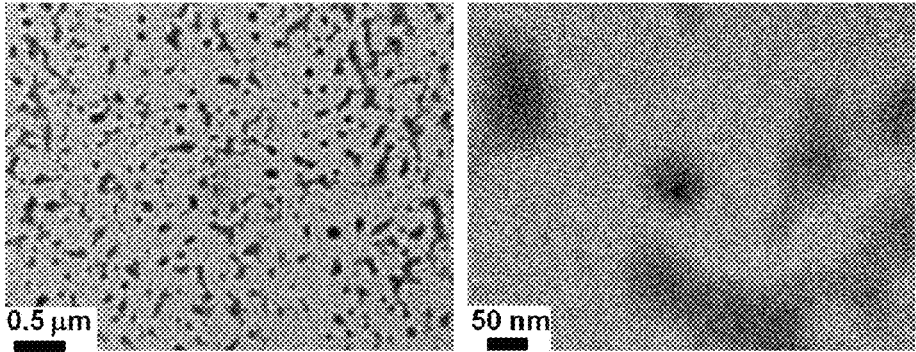


FIG. 1

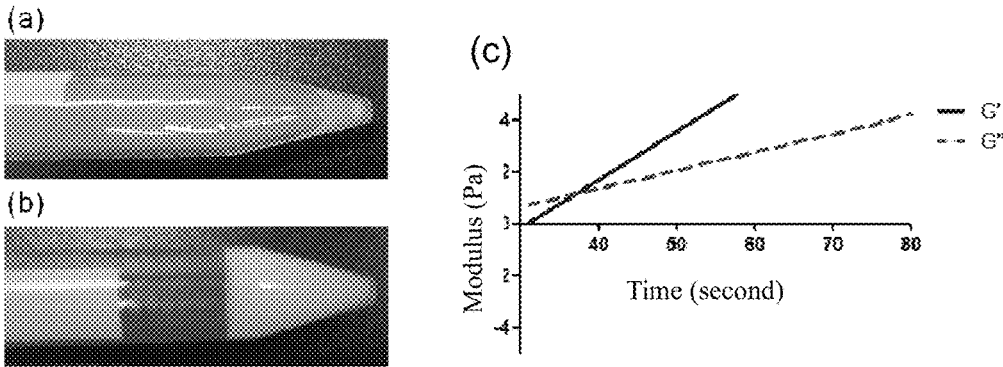


FIG. 2

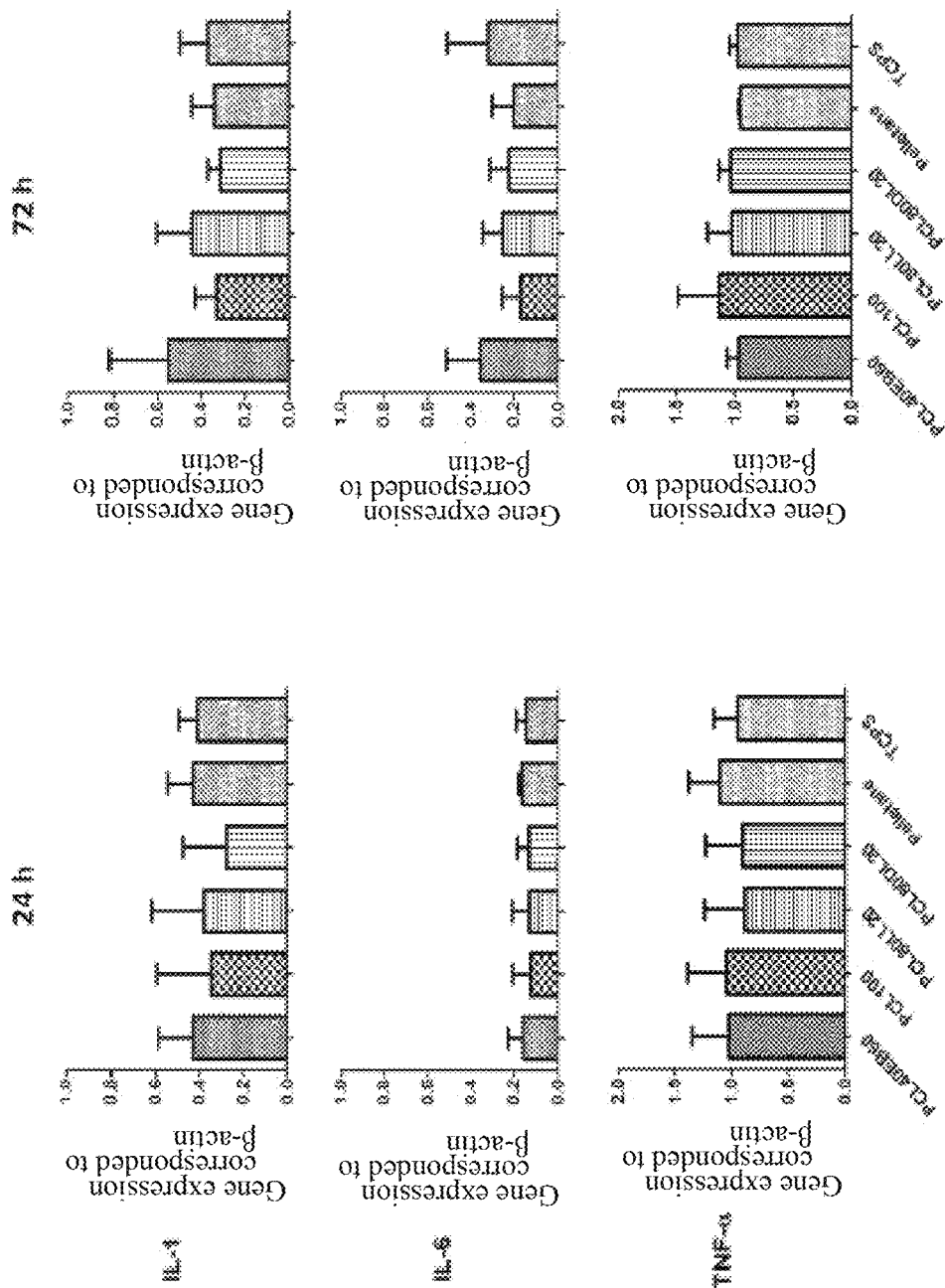


FIG. 3

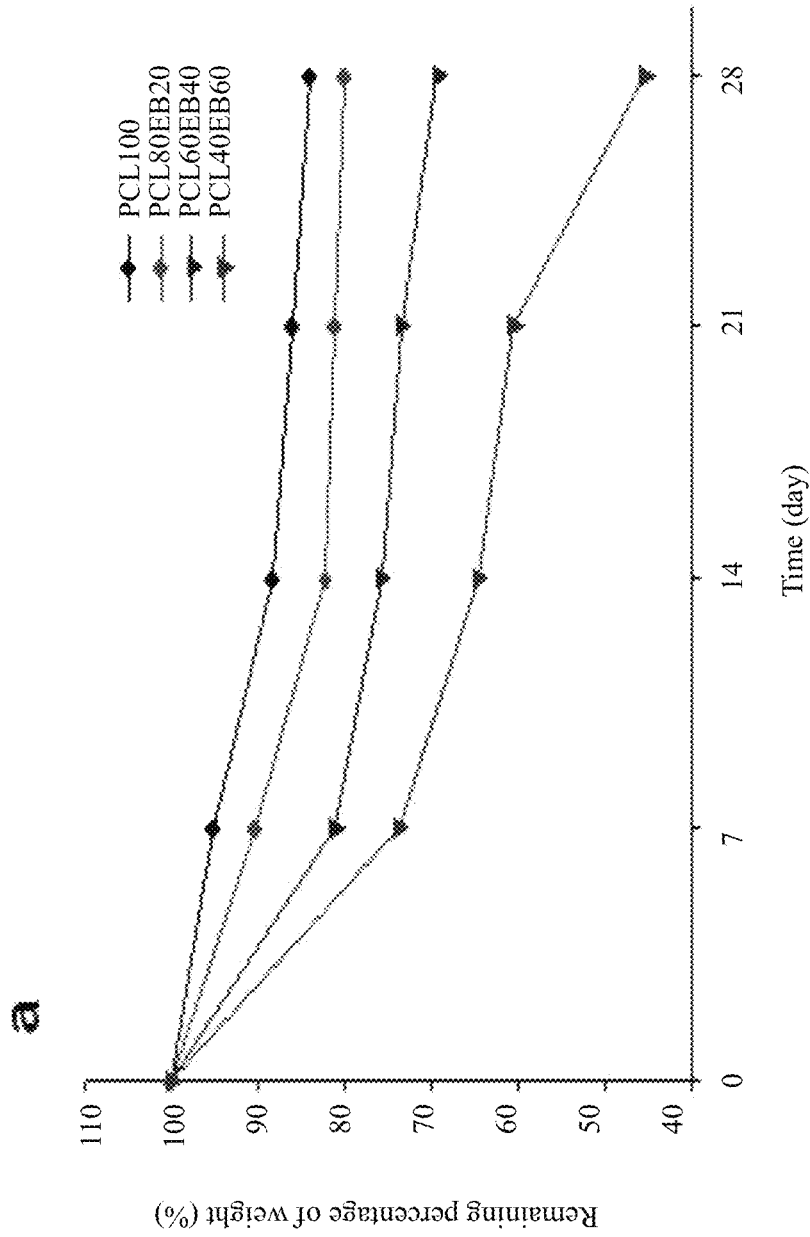


FIG. 4

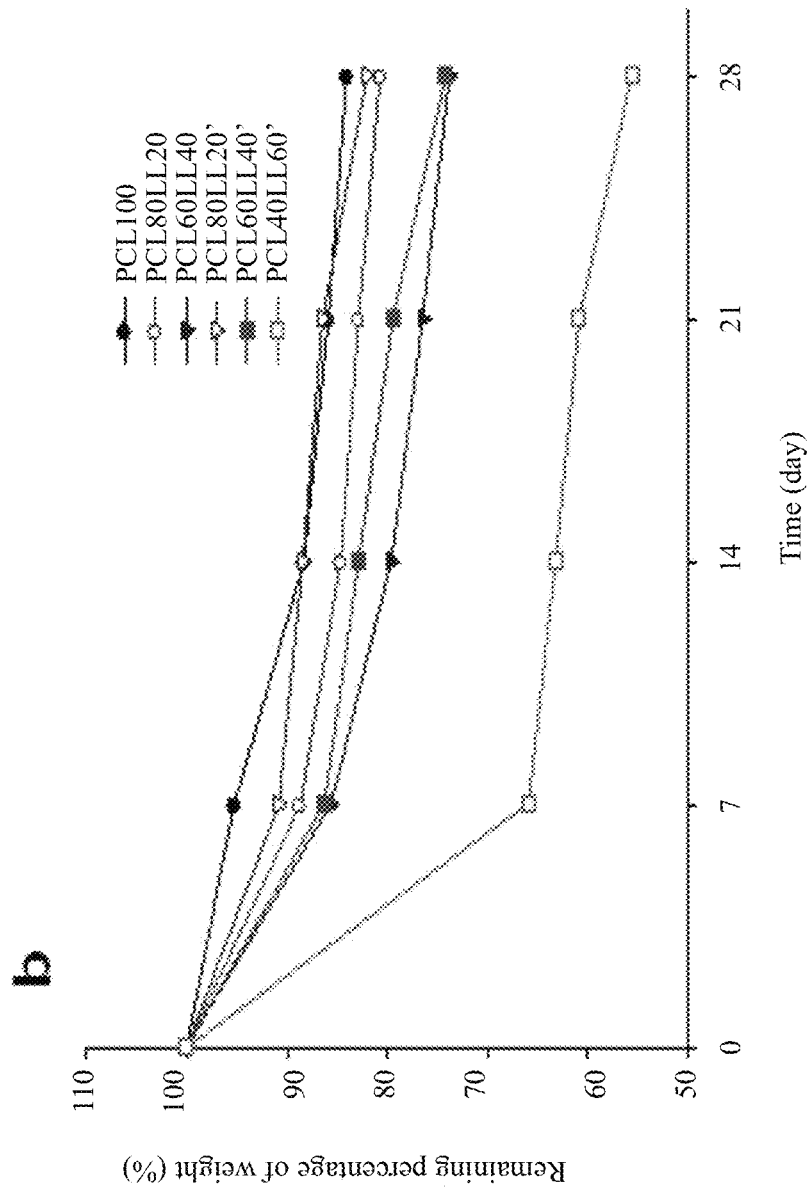


FIG. 4 (Cont.)

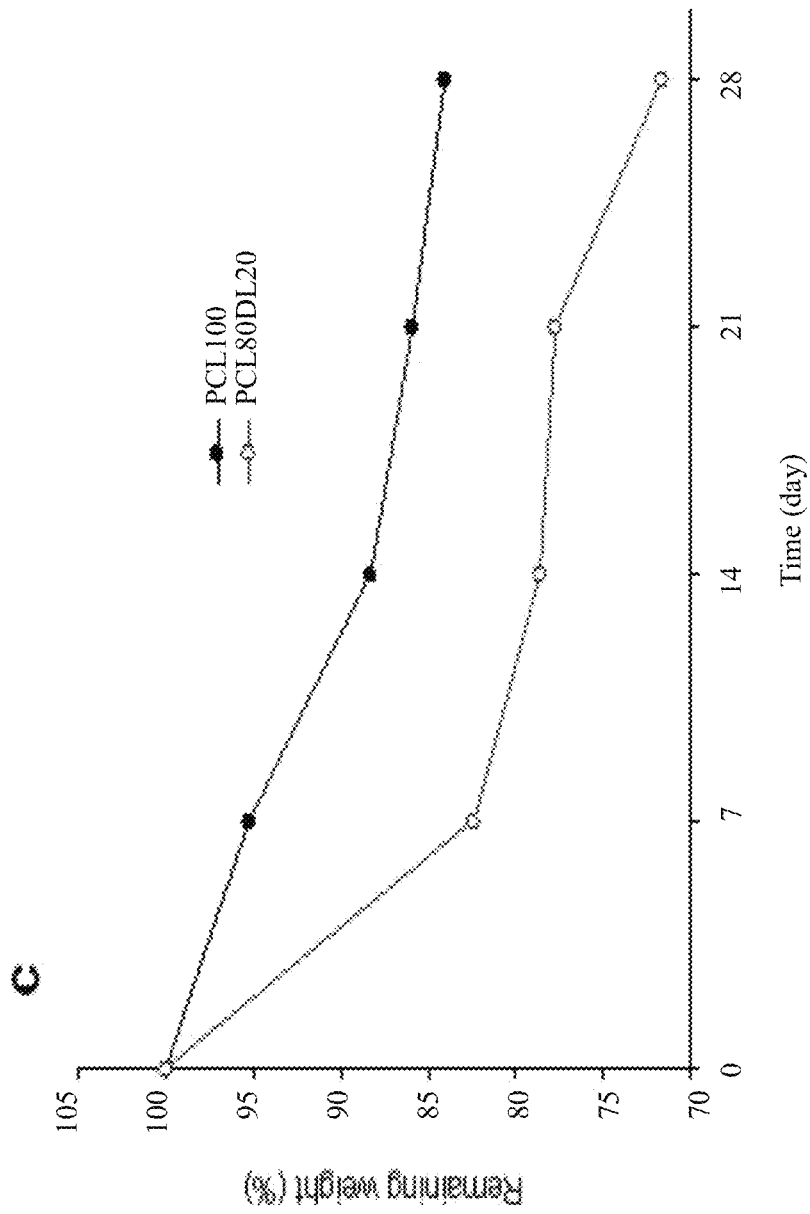


FIG. 4 (Cont.)

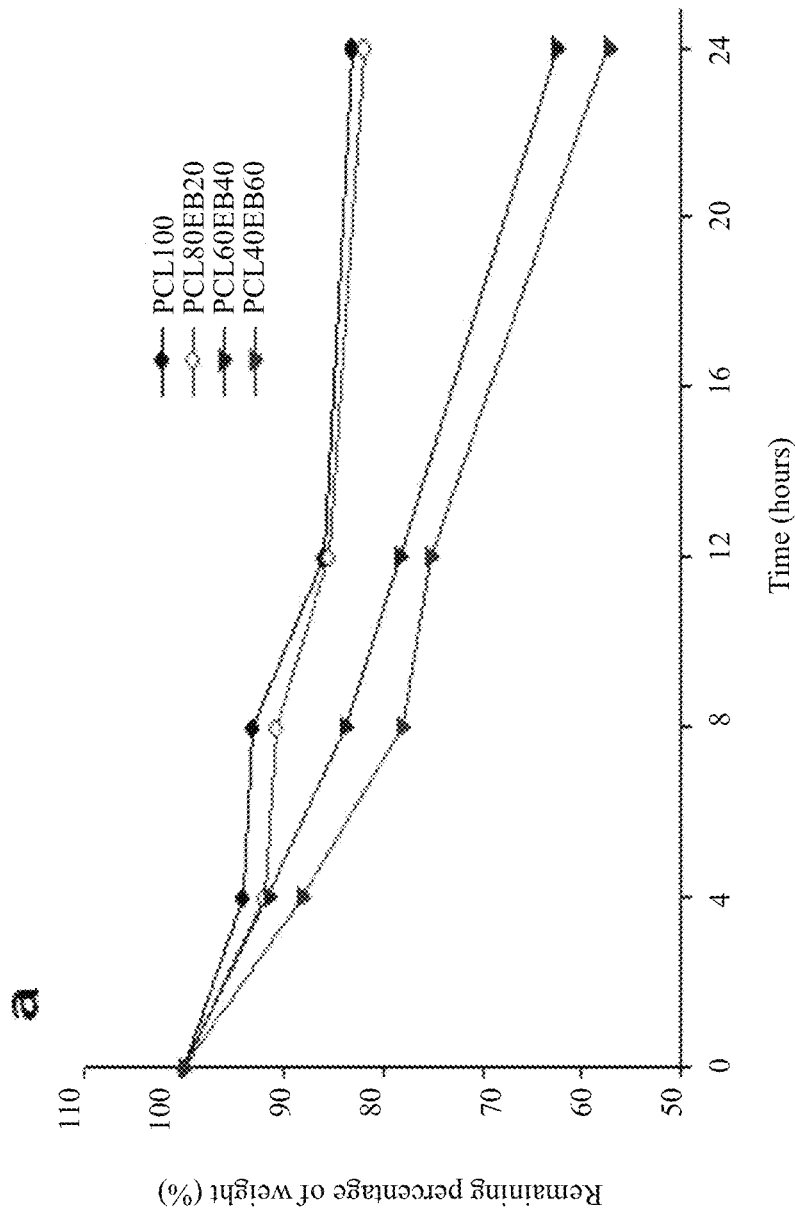


FIG. 5

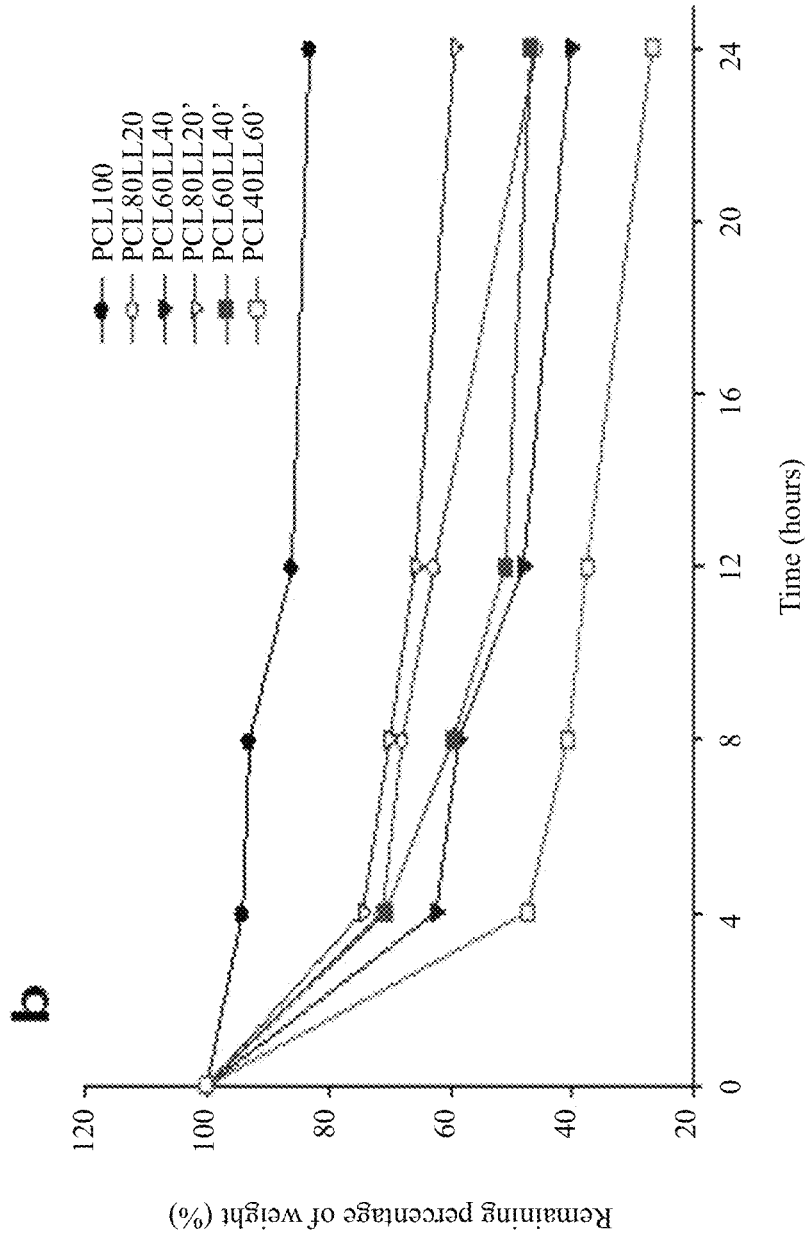


FIG. 5 (Cont.)

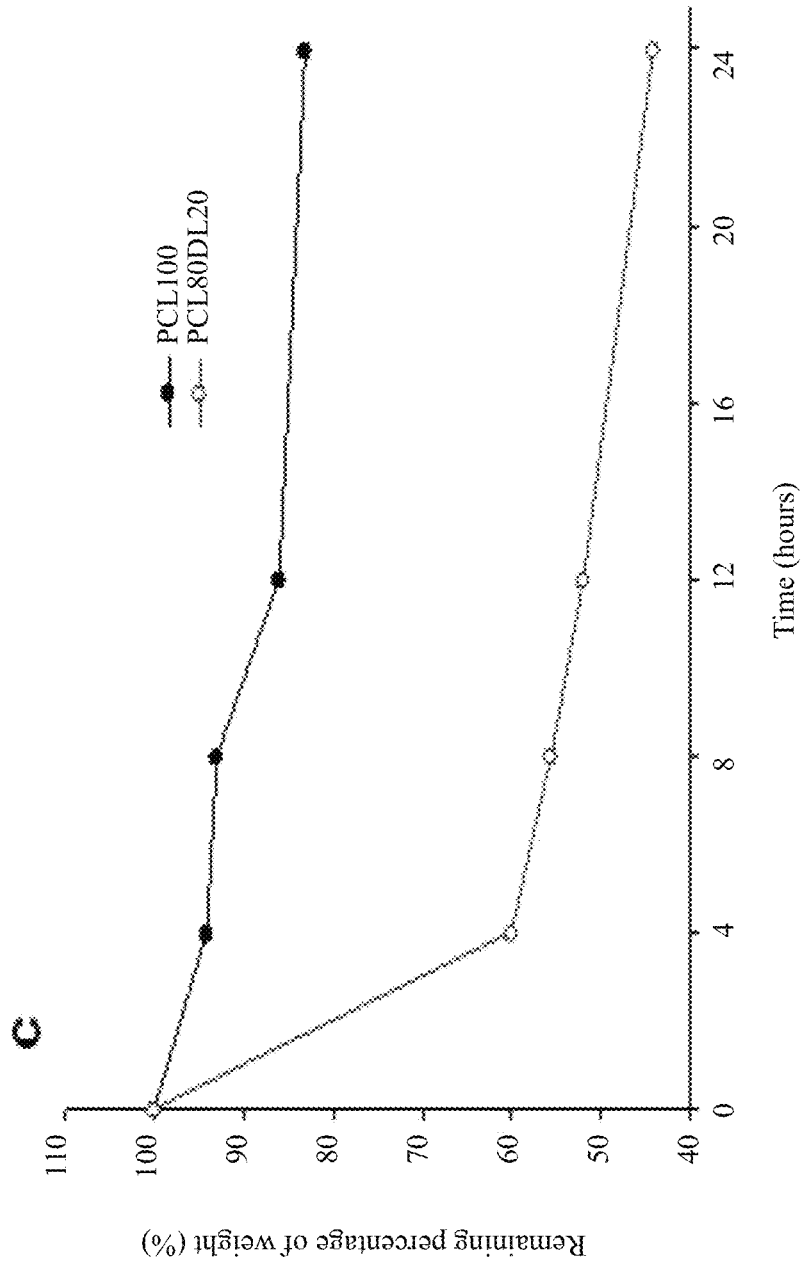


FIG. 5 (Cont.)

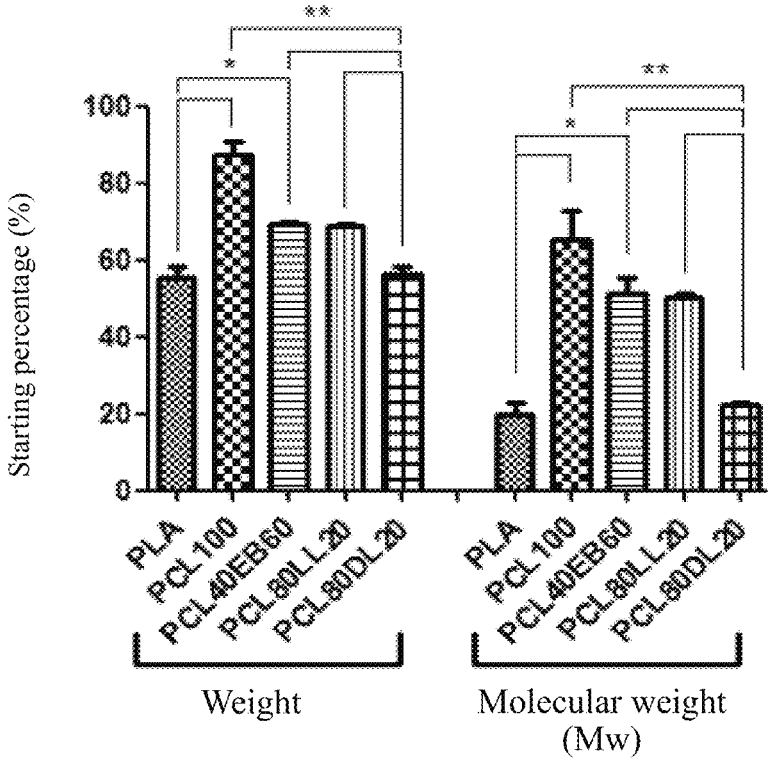


FIG. 6

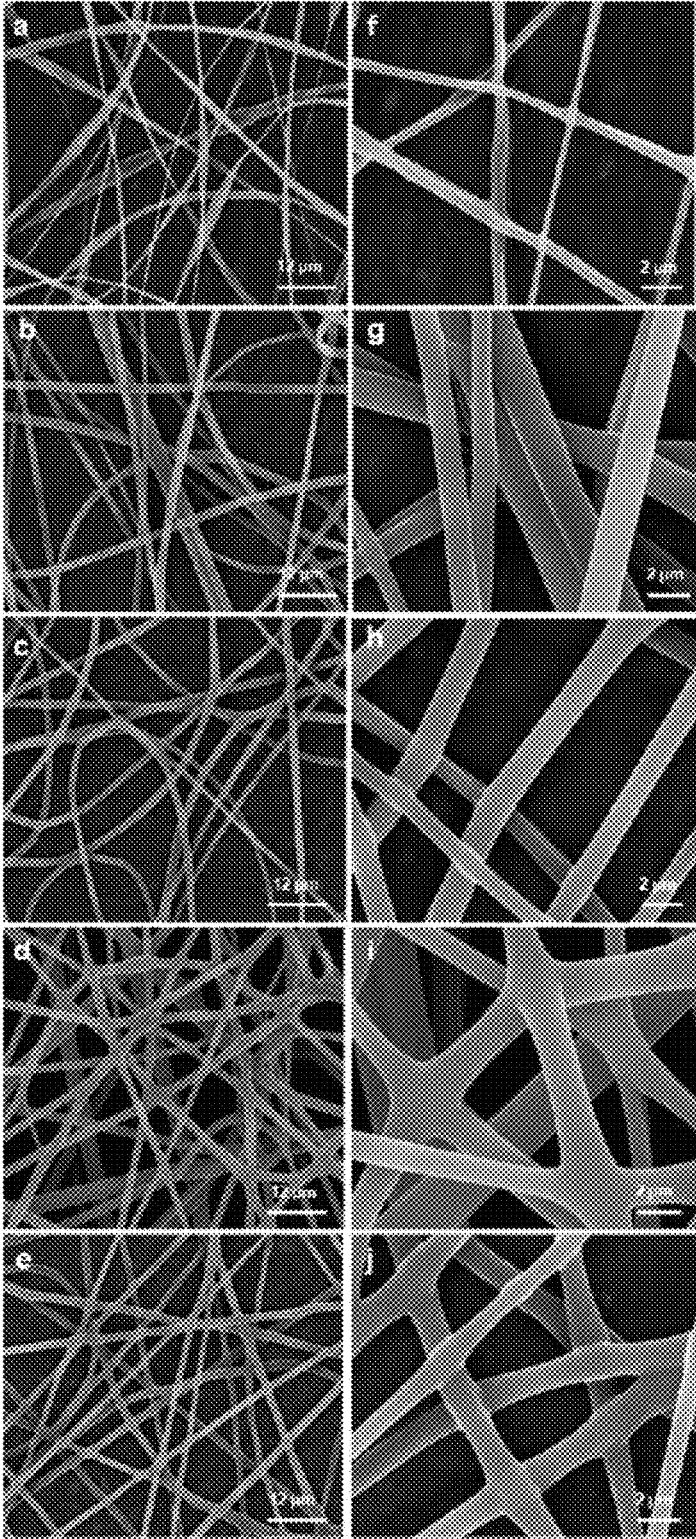


FIG. 7

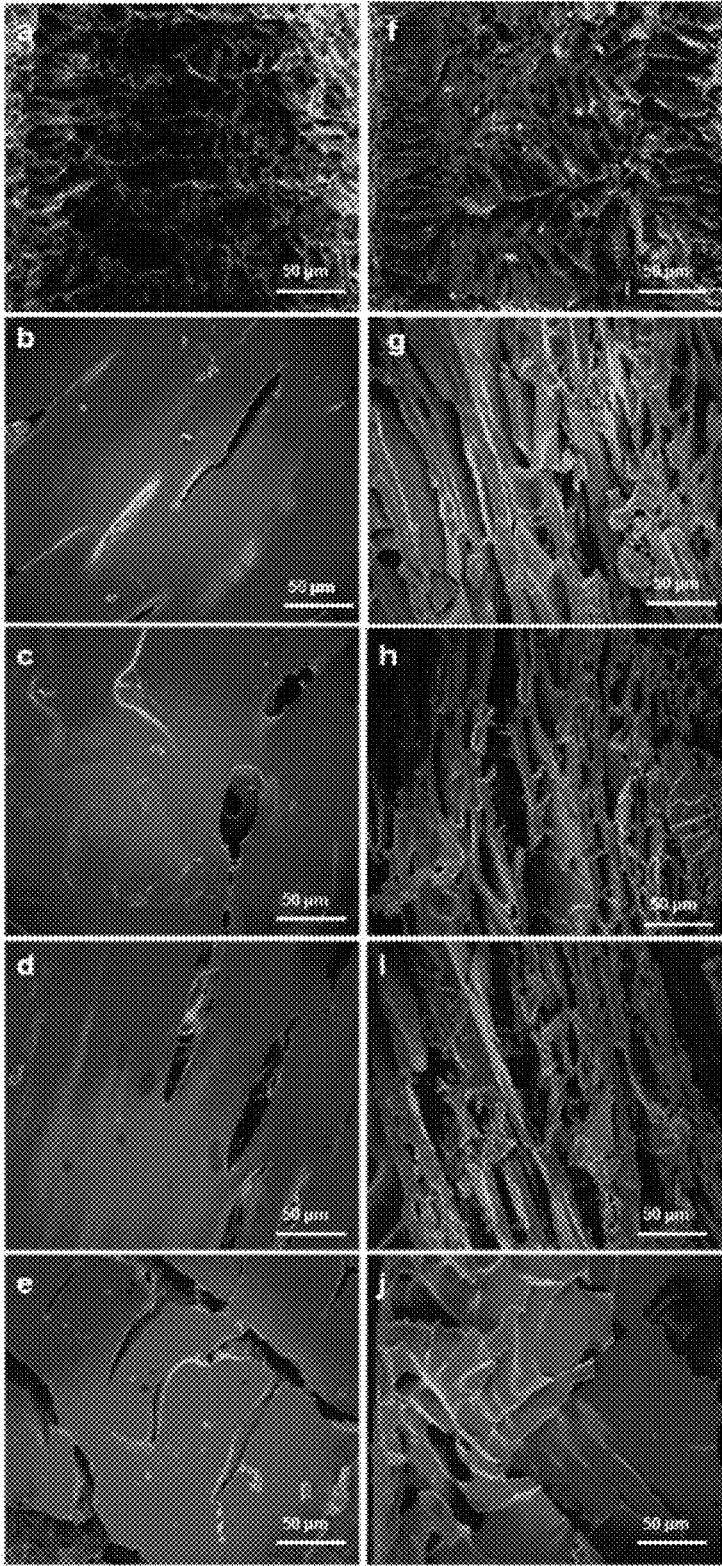


FIG. 8

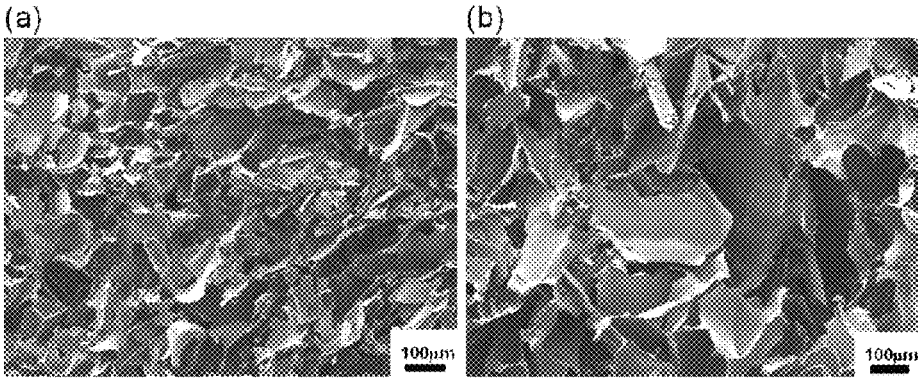


FIG. 9

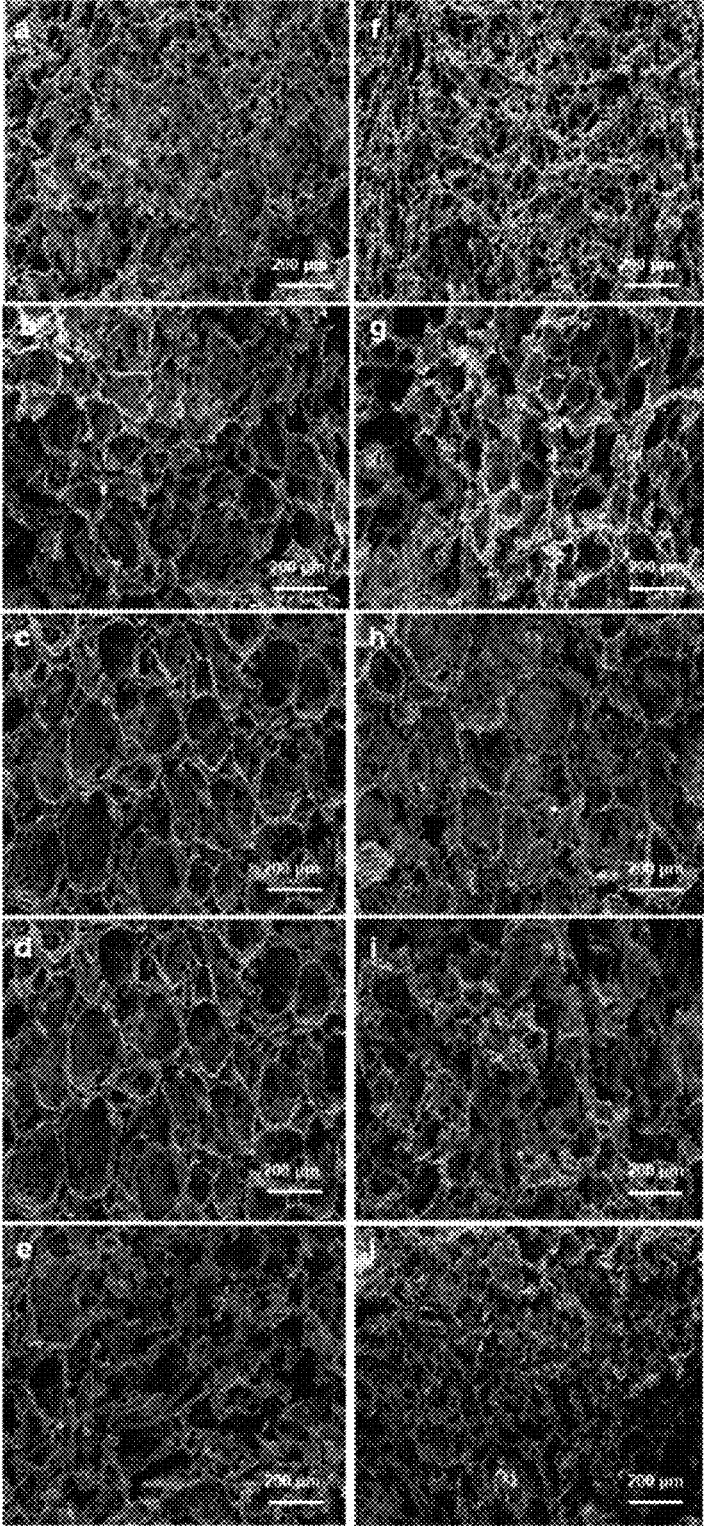


FIG. 10

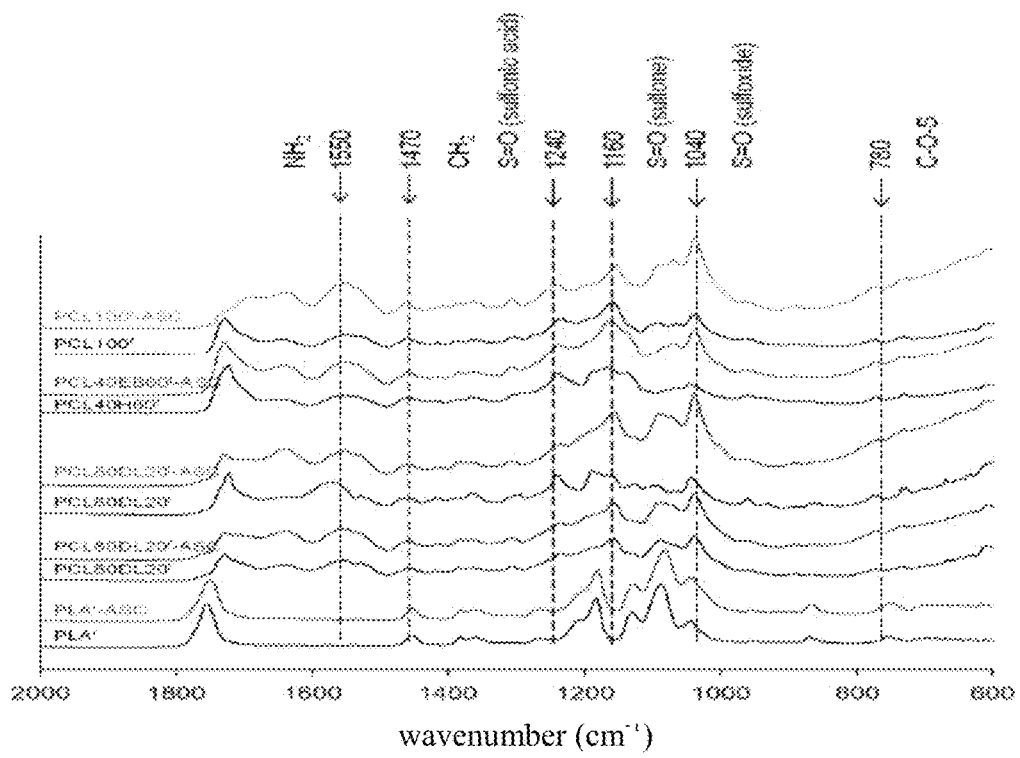


FIG. 11

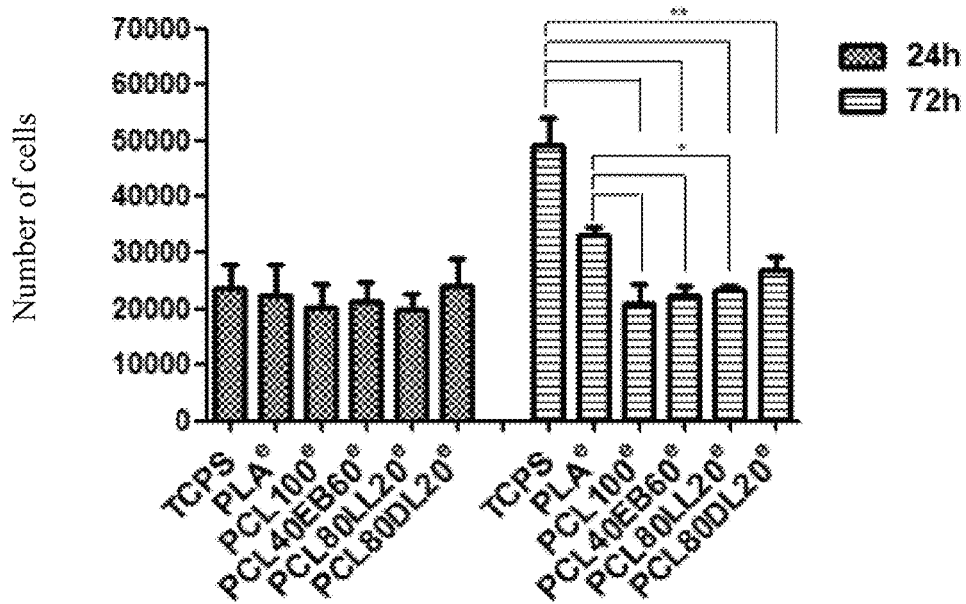


FIG. 12

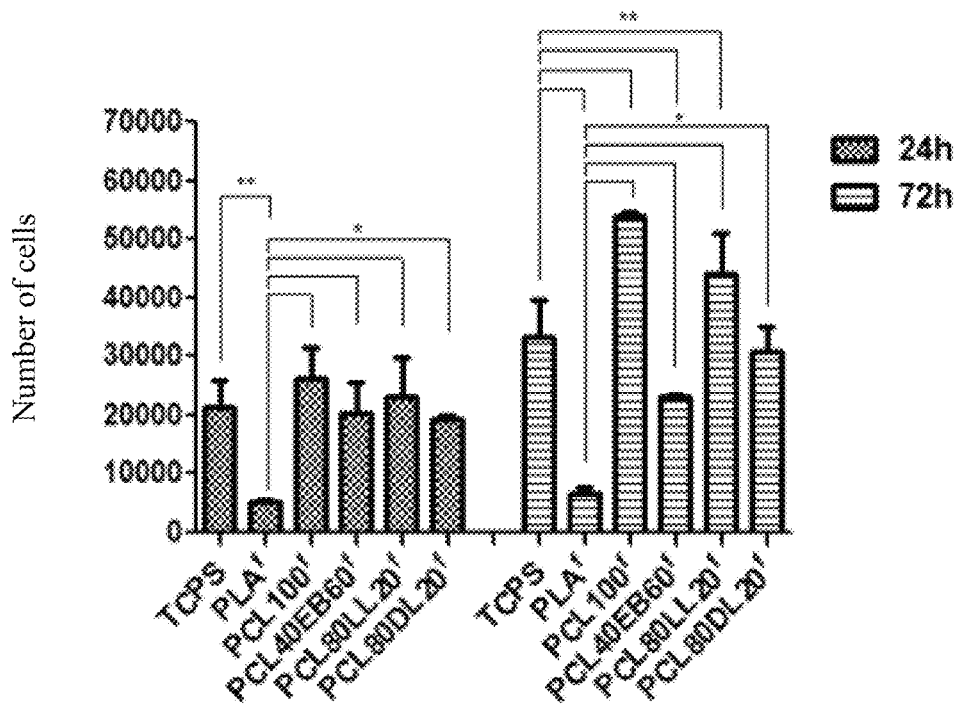


FIG. 13

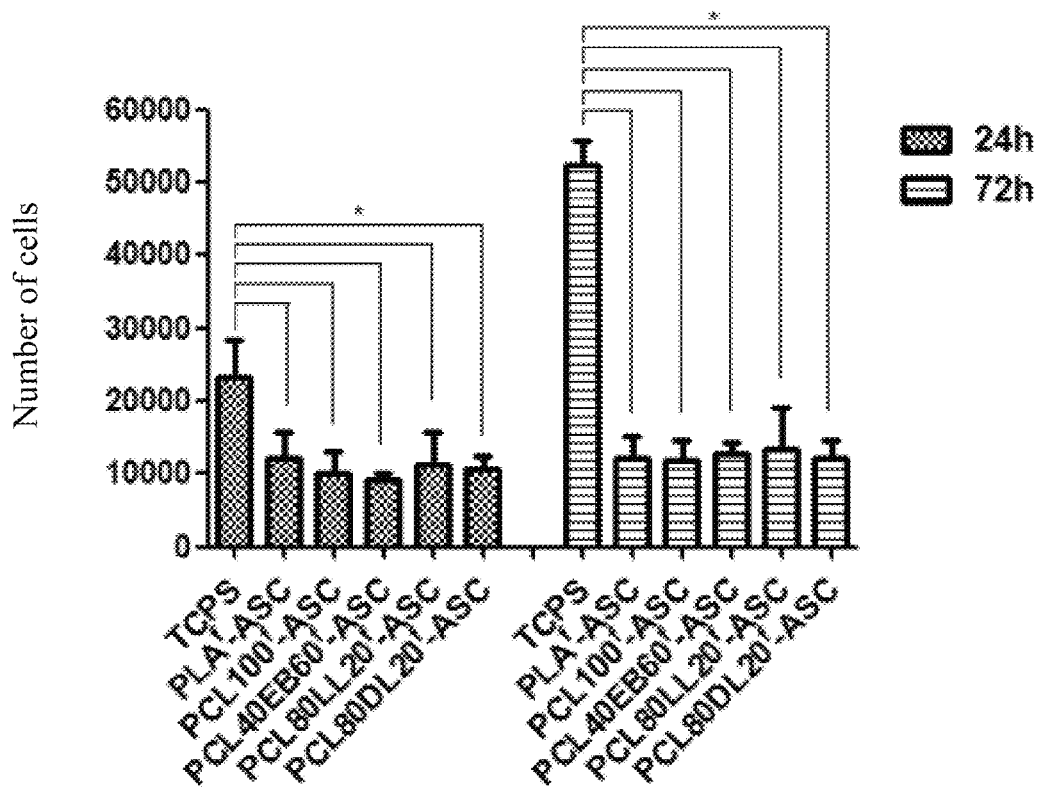


FIG. 14

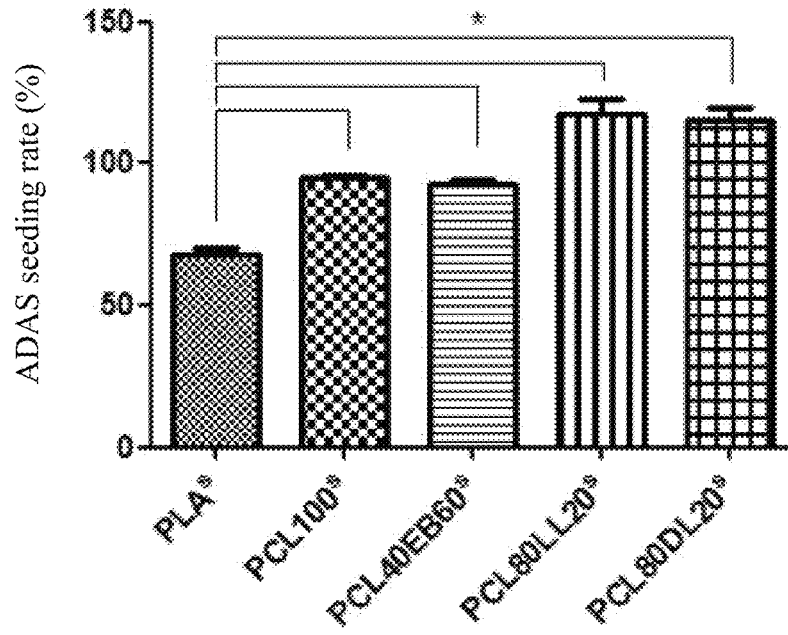


FIG. 15

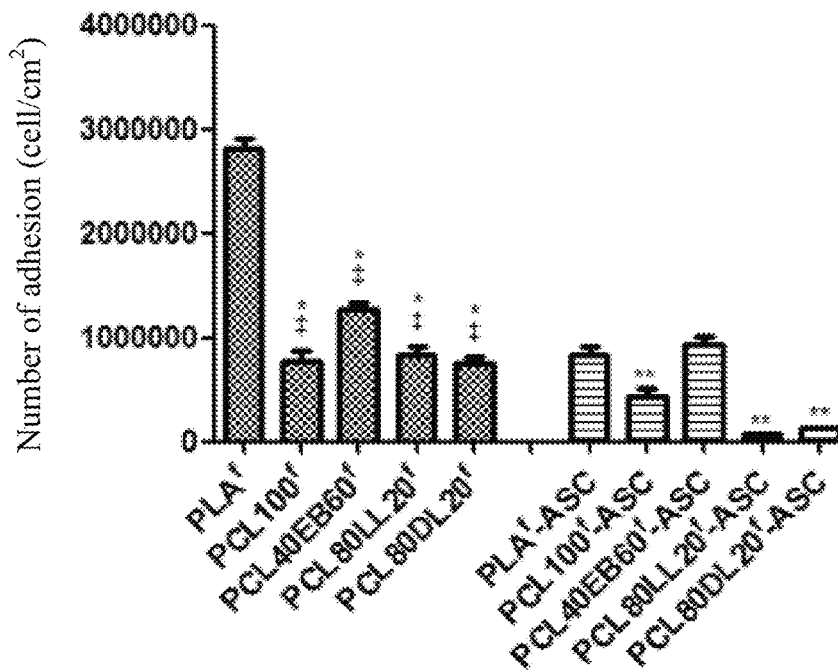


FIG. 16

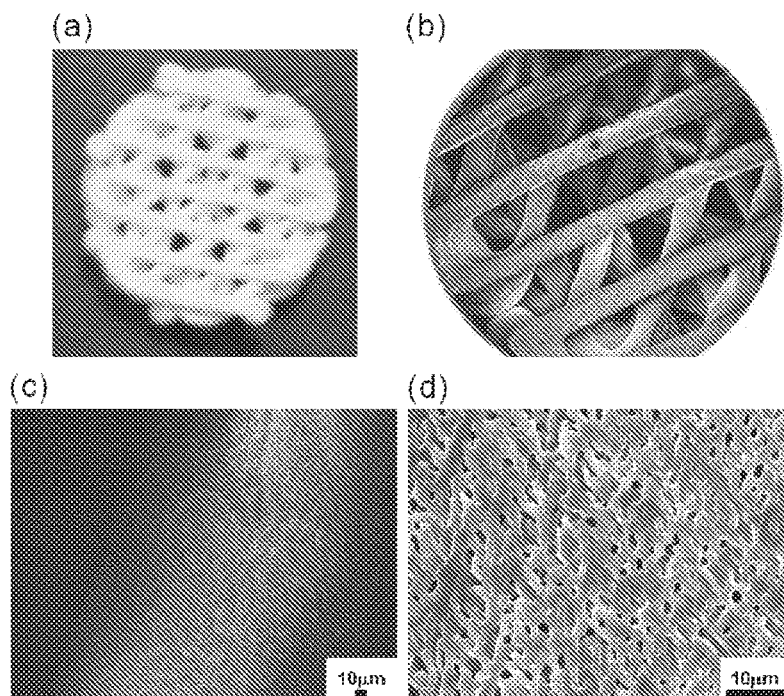


FIG. 17

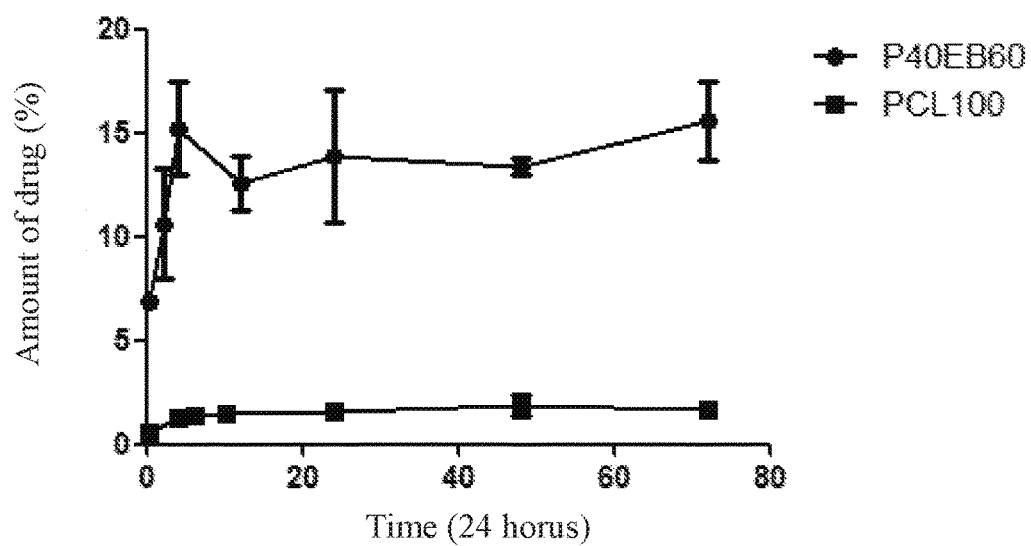


FIG. 18

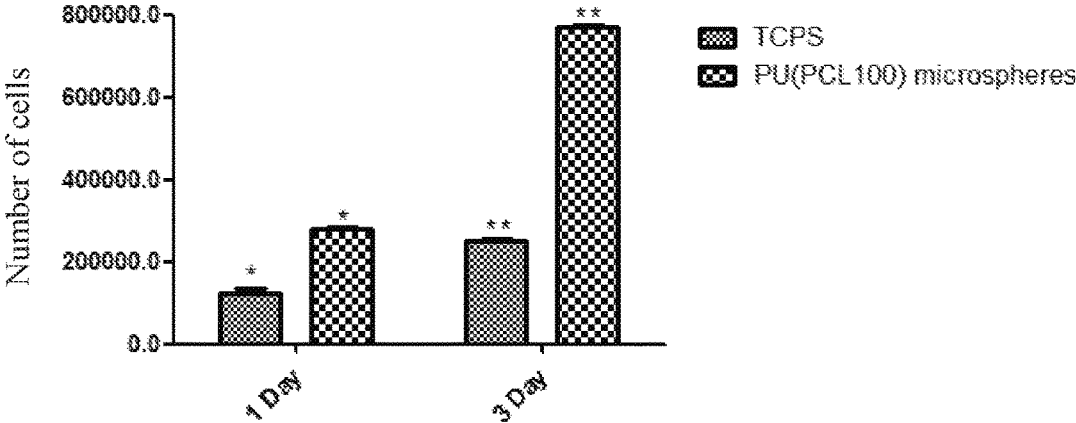


FIG. 19

BIOCOMPATIBLE AND BIODEGRADABLE ELASTOMER

CROSS-REFERENCES TO RELATED APPLICATIONS

This application claims priority to Taiwan Patent Application No. 102100076 filed on 2 Jan. 2013. All disclosure of which is incorporated herein by reference in its entirety.

BACKGROUND OF THE INVENTION

1. Field of the Invention

The present invention relates to a biocompatible and biodegradable elastomer, and, particularly, a biocompatible and biodegradable elastomer suitable for the use of vascular graft.

2. The Prior Arts

Vascular graft can serve as vascular transplant material and substitute specific blood vessel in human body that is damaged by aging or pathologies such as atherosclerosis; or serve as graft fistula for patients undergoing hemodialysis. Vascular transplant materials often used in general surgical operations can be biological vascular graft or synthetic vascular graft.

Biological vascular graft includes autologous transplantation grafts and allogenic transplantation grafts, in which autologous transplantation grafts are often originated from saphenous veins or internal mammary arteries. Although saphenous veins and internal mammary arteries are ideal material, the source is limited. Allogenic transplantation grafts, on the other hand are usually the chemically treated blood vessels taken from animal bodies. Although the source of allogenic transplantation graft is much abundant, thrombus, vascular tangles, and aneurysm are likely to occur upon transplanting into human bodies.

The development of synthesized vascular graft dated from the success of vinyl chloride-acrylonitrile copolymer fiber (Vinyon N) vascular graft introduced by Voorhees in 1952. It was also been proved to be clinically applicable. Synthesized vascular graft can also be categorized into non-biodegradable or biodegradable vascular graft according to its material. With respect to biological vascular graft, synthesized vascular graft is unlikely to cause problems such as immune response, thrombus, or vascular calcification, thus is considered to be the more ideal vascular graft for transplantation.

Biomedical materials for the applications of vascular graft preparation should take into account of factors such as good biocompatibility, outstanding flexibility and compliance, appropriate pore size, and having functional endothelial layer. Vascular graft, according to the diameter, can be divided into large diameter (>8 mm) vascular graft, medium diameter (6 to 8 mm) vascular graft, and small diameter (<6 mm) vascular graft (or namely small vascular graft). Small vascular grafts with diameter less than 6 mm can be used to substitute blood vessels with lower blood flow such as arteriole, coronary artery, or groin artery, however, currently the replacement of arteriole or vein with small vascular graft yet to reach satisfactory results due to undesirable long-term patency, as well as problems such as inner layer thickening of angiogenesis and vascular narrowing or blocking. Hence, the development of small vascular grafts that possess similar characteristics to human artery and vein as well as good biocompatibility to minimize problems of inner layer thickening of the newborn vessel is a critical task for modern vascular graft engineering.

Biodegradable elastomer is the macromolecule that exhibits advantages such as elasticity and biodegradability as well as good biocompatibility, mechanical property, and workability, and can be widely used in the field of biomedicine, for example, hard tissue embedding, repairing material, surgical suture, carrier for drug release, and vascular tissue engineering. Thus, the development of a biocompatible and biodegradable elastomer with features that can be used as vascular graft can dramatically promote the advance of vascular tissue engineering.

SUMMARY OF THE INVENTION

The accomplish the abovementioned industrial needs, the present invention provides a biocompatible and biodegradable elastomer, comprising: a main chain of polyurethane comprising a hard segment and a soft segment, the hard segment is formed by reaction of diisocyanate and a chain extender, and the soft segment is a biodegradable oligomer diol, wherein the biodegradable oligomer diol is selected from the group consisting of polycaprolactone diol, polyethylene butylene adipate diol, polylactic acid diol, and any combinations thereof.

In one embodiment of the present invention, the amount of the soft segment is between 45% and 75% w/w of the total weight of the elastomer. The polylactic acid diol is L-lactic acid or DL-lactic acid. When the soft segment is consisted of polycaprolactone diol and polyethylene butylene adipate diol, the polycaprolactone diol is in an amount of greater than 0.3 molar fraction of the degradable oligomer diol; when the soft segment is consisted of polycaprolactone diol and polylactic acid diol, the polycaprolactone diol is in an amount of greater than 0.4 molar fraction of the degradable oligomer diol; and when the soft segment is consisted of polycaprolactone diol and polylactic acid diol, the polycaprolactone diol is in an amount of greater than 0.8 molar fraction of the degradable oligomer diol. The diisocyanate is alicyclic polyisocyanate, and preferably, isophorone diisocyanate, whereas the chain extender is preferably ethylene-diamine.

Another aspect of the present invention is to provide biocompatible and biodegradable elastic membrane made of the above biocompatible and biodegradable elastomer, wherein the Young's modulus of the biocompatible and biodegradable elastic membrane is greater than 0.5 MPa and smaller than 40 MPa, the tensile strength of the biocompatible and biodegradable elastic membrane is greater than 5 MPa and less than 50 MPa, the elongation of the biodegradable elastic membrane is greater than 400%.

Another aspect of the present invention is to provide a vascular graft made of the above biocompatible and biodegradable elastomer, wherein a plurality of pores are present on the wall of the vascular graft with an average pore diameter on the outer surface is between 5 to 50 μm , and an average pore diameter on the cross-section is between 10 to 100 μm . The elongation of the vascular graft is greater than 220%, and the pores are made by using freeze drying or particle-leaching method; additionally, the surface of the wall of the vascular graft can be chemically modified.

Another aspect of the present invention is to provide a carrier made of the above biocompatible and biodegradable elastomer, wherein the carrier is present in the form of microspheres, hydrogel, nanodispersion, nanodispersion-coated inorganic nanoparticle, foam, electrospinning fiber, or scaffold. The carrier exhibits electronegativity, amphiphilicity, and anticoagulant ability and is used for carrying a cell, a gene, or a drug.

According to the technical features of the present invention, a biocompatible and biodegradable elastomer can be obtained, and the elastomer can further be made into scaffold which the diameters of the pores on the surface and the cross-section are within the range of the diameter of vascular graft endothelialization. Additionally, the scaffold not possess significant blood coagulation function. Endothelial cells and adipose-derived stem cells can be successfully implanted onto the scaffold and proliferate. The scaffold also exhibits good biocompatibility with no inflammatory response and low allogenic response, which indicates being an ideal material for vascular graft. Moreover, the characteristics of electronegativity and non-blood-platelet-activation of the biocompatible and biodegradable elastomer of the present invention indicating its anticoagulant ability.

On the other hand, the biocompatible and biodegradable elastomer of the present invention possesses good dispersion stability and blood compatibility. The biocompatible and biodegradable elastomer of the present invention from hydrogel by increasing temperature, or prepared in the form of microsphere, fiber, 3D foam, and sophisticated scaffold. This advantages of various waterborne workability allow the biocompatible and biodegradable elastomer of the present invention to be widely used in the field of biomedicine.

The present invention is further explained in the following embodiment illustration and examples. Those examples below should not, however, be considered to limit the scope of the invention, it is contemplated that modifications will readily occur to those skilled in the art, which modifications will be within the spirit of the invention and scope of the appended claims.

BRIEF DESCRIPTION OF THE DRAWINGS

FIG. 1 is the TEM image of the waterborne biodegradable polyurethane emulsion.

FIGS. 2(a) and (b) are the entitative image of the waterborne biodegradable polyurethane emulsion in low and high temperature; (c) is the Rheology analytical result of the waterborne biodegradable polyurethane emulsion.

FIG. 3 is the inflammatory test of murine macrophage using different waterborne biodegradable polyurethane.

FIG. 4 is the relationship of the remaining percentage of weight of the waterborne biodegradable polyurethane under the accelerated degradation by PBS at 50° C., wherein (a) indicates soft segment consisting of PCL diol and PEBA diol; (b) indicates soft segment consisting of PCL diol and PLLA diol; (c) indicates soft segment consisting of PCL diol and PDLLA diol.

FIG. 5 is the relationship of the remaining percentage of weight of the waterborne biodegradable polyurethane under the accelerated degradation by NaOH at 37° C., wherein (a) indicates soft segment consisting of PCL diol and PEBA diol; (b) indicates soft segment consisting of PCL diol and PLLA diol; (c) indicates soft segment consisting of PCL diol and PDLLA diol.

FIG. 6 is the remaining percentage of weight and the remaining percentage of molecular weight before and after implantation. (*p<0.05; **p<0.05)

FIG. 7 is the surface configuration of electrospinning fibers, wherein (a, f) indicate PLA^e; (b, g) indicate PCL100^e; (c, h) indicate PCL40EB60^e; (d, i) indicate PCL80LL20^e; (e, j) indicate PCL80DL20^e.

FIG. 8 is the surface configuration of membrane freeze dried at -20° C., wherein (a, f) indicate PLA^f; (b, g) indicate PCL100^f; (c, h) indicate PCL40EB60^f; (d, i) indicate PCL80LL20^f; (e, j) indicate PCL80DL20^f; (a, b, c, d, e)

indicate the surface configuration and (f, g, h, i, j) indicate the cross-section configuration.

FIG. 9 is the SEM image of the foams of waterborne biodegradable polyurethane emulsion formed by 10% dilution and freeze drying, where (a) is the top view and (b) is the bottom view.

FIG. 10 is the surface configuration of scaffold obtained by using glucose in particle-leaching and freeze drying at -20° C., wherein (a, f) indicate PLA^s; (b, g) indicate PCL100^s; (c, h) indicate PCL40EB60^s; (d, i) indicate PCL80LL20^s; (e, j) indicate PCL80DL20^s; (a, b, c, d, e) indicate the surface configuration and (f, g, h, i, j) indicate the cross-section configuration.

FIG. 11 is the analytical results of freeze dried membrane with surface modification by sulfonated chitosan using Attenuated Total Reflection Fourier Infrared Spectroscopy.

FIG. 12 is adhesion at 24 hours and proliferation 72 hours of endothelial cells (ECs) in the cell seeding density of 2×10⁴ cell/well using different electrospinning fibers. (*p<0.05; **p<0.05)

FIG. 13 is adhesion at 24 hours and proliferation 72 hours of endothelial cells (ECs) in the cell seeding density of 2×10⁴ cell/well using different freeze dried membrane. (*p<0.05; **p<0.05)

FIG. 14 is adhesion at 24 hours and proliferation 72 hours of endothelial cells (ECs) in the cell seeding density of 2×10⁴ cell/well using freeze dried membrane with surface modification. (*p<0.05)

FIG. 15 is seeding rate of rat adipose-derived stem cells (rADAS) at 24 hours using different freeze dried scaffold. (*p<0.05)

FIG. 16 is amount of blood platelet adhesion using different freeze dried membrane. (*p<0.05; **p<0.05; ‡p<0.05)

FIG. 17 is the structurally opened 3D scaffold with stacking regular micropillar made by waterborne biodegradable polyurethane emulsion, wherein (a) is the visible appearance and (b to d) are SEM images with different magnifying powers.

FIG. 18 is the drug carrying ability of PCL40EB60 microsphere and PCL100 microsphere.

FIG. 19 is cell carrying ability of PCL100 microsphere.

DETAILED DESCRIPTION OF THE PREFERRED EMBODIMENT

Definition

As used herein, unless otherwise specified, the term “biocompatible and biodegradable polyurethane”, “waterborne biodegradable polyurethane”, “biodegradable polyurethane” or “biodegradable elastomer” refers to the “biocompatible and biodegradable elastomer” of the present invention.

As used herein, unless otherwise specified, the term “amphiphilicity” refers to the characteristic of being hydrophilic and hydrophobic simultaneously.

One embodiment of the present invention is to prepare a biocompatible and biodegradable elastomer which is waterborne without cross-linking system, comprising a main chain of polyurethane which comprises a hard segment and a soft segment, the hard segment is formed by reaction of diisocyanate and a chain extender, and the soft segment is formed by reaction of a biodegradable oligomer diol and polycaprolactone diol (PCL diol). The biodegradable oligomer diol is polyethylene butylene adipate diol (PEBA diol) or polylactic acid diol. More specifically, the polylactic

acid diol is poly-L-lactic acid diol (PLLA diol) or poly-DL-lactic acid diol (PDLA diol).

The amount of the soft segment is between 45% and 75% w/w of the total weight of the biocompatible and biodegradable elastomer of the present invention, and in one embodiment of the present invention, the amount of the soft segment is represented by 65% w/w of the total weight of the biocompatible and biodegradable elastomer.

In another embodiment of the present invention, coating or grafting sulfonated chitosan onto the surface of the biocompatible and biodegradable elastomer is disclosed, and this material is made into tubular shape such as but not limited to artificial vascular graft, the elastomer can also be made into porous body, membrane, and cell scaffold.

The biocompatible and biodegradable elastomer of the present invention is used in the murine macrophage inflammatory test to proof that the biocompatible and biodegradable elastomer of the present invention does not activate macrophage and not cause inflammatory response. On the other hand, by the degradation test at 50° C. using PBS, the biocompatible and biodegradable elastomer of the present invention is proofed to exhibit higher degradation rate comparing to the polyurethane of the control groups. The biocompatible and biodegradable elastomer having different soft segments exhibit different degradation rate according to the components and proportions.

In another embodiment of the present invention, the biocompatible and biodegradable elastomer is made into scaffold by using electrospinning, freeze drying, and particle-leaching method. The diameter of pores on the surface and cross-section pores of the scaffold made using these three methods are within the pore diameter range required for vascular graft endothelialization, thus, the scaffolds made of the biocompatible and biodegradable elastomer are ideal material for vascular graft.

The abovementioned scaffold is subjected to biocompatibility test, in the endothelial cell adhesion and proliferation test, the scaffold made of the biocompatible and biodegradable elastomer of the present invention exhibits significant higher adhesion rate and proliferation rate comparing to the control group (TCPS medium), thus, can promote the adhesion and proliferation of endothelial cells, hence, promote the angiogenesis. On the other hand, in the adipose-derived stem cell seeding rate test, the scaffold made of the biocompatible and biodegradable of the present invention shows significant higher seeding rate than the control group (PLA), indicating that cells can be successfully implanted onto the scaffold and can survive and proliferate without wet condition. In the blood platelet adhesion test, a tendency to decrease regarding blood platelet adhesion and activation can be observed after the surface modification, indicating that surface modification can suppress blood platelet adhesion and activation.

In the embodiments of the present invention, the terminology of the waterborne biodegradable polyurethane in different ratio is shown in Table 1. In addition, the waterborne biodegradable polyurethane made using electrospinning, freeze drying, or particle-leaching method incorporated with freeze drying are represented by using an upper index of e, f, or s, respectively, as suffixes; different waterborne biodegradable polyurethane with surface modification of sulfonated chitosan are represented by using “-ASC” as suffixes.

In embodiments of the present invention, experimental results are expressed as mean±standard error of the mean. Mean was analyzed using the t-test. Statistically significant difference was set at the level of P<0.05.

Preparation of Degradable Elastomer

1-1 Formulation

The different soft segments were prepared by mixing three different degradable (water degradable) oligomer diols and polycaprolactone diol with several ratios so as to synthesize various degradable polyurethane in which the rate of degradation is controllable. The three different soft segments are shown in Table 1, where EB represents PEBA, LL represents PLLA and DL represents PDLA. The soft segment with 20 wt % poly(lactic acid diol) is shown in Table 2. Firstly, 4.4 wt % of 2,2-bis(hydroxymethyl)propionic acid (DMPA, Aldrich) was fixed. The molar ratio of isocyanate functional group and hydroxyl group of the prepolymer before water-dispersion was set at 1.9 (NCO/OH), while the molar ratio of isocyanate functional group and hydroxyl group plus amine group of the prepolymer after water-dispersion was set at 1.08 (NCO/(OH+NH₂)). Additionally, 85 mol % of chain extender with solid content of 30 wt % was added. The ratio of IPDI:marcodiols:DMPA:EDA:TEA was 3.76:1:1.51:1. The detailed formulation is shown in Table 3.

The waterborne biodegradable polyurethane PCL100 is formulated by replacing the proportion of soft segment or diol shown in Table 2 and Table 3 with 100% polycaprolactone diol. The PCL40EB60 is formulated by replacing the proportion of soft segment or diol shown in Table 2 and Table 3 with 40% polycaprolactone diol and 60% polyethylene butylene adipate diol.

TABLE 1

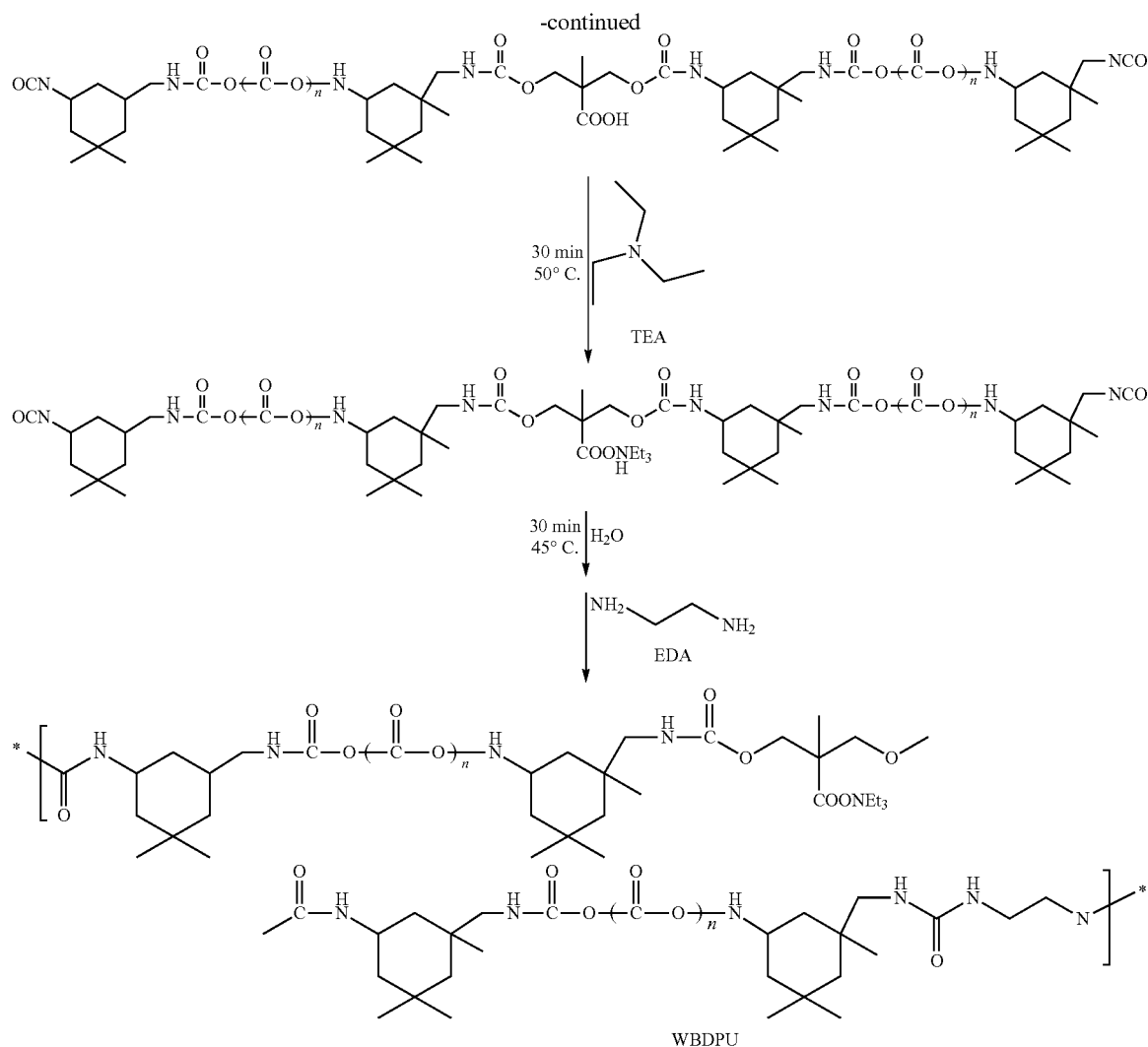
Sample	Molar ratio of the soft segment				Prepolymerization temperature (° C.)
	PCL diol	PEBA diol	PDLA diol	PLLA diol	
PCL100	100	—	—	—	75
PCL40EB60	40	60	—	—	75
PCL80LL20	—	80	—	20	95
PCL80DL20	—	80	20	—	75

TABLE 2

Waterborne biodegradable polyurethane with soft segment of 20 wt % poly(lactic acid diol)	
Samples of waterborne biodegradable polyurethane	P-20
Total weight (g)	358
Total solid weight (g)	107
Iso index before water-dispersion (NCO/OH)	1.90
Iso index after water-dispersion ((NCO/(OH + NH ₂)))	1.08
amine mol % of prepolymerized NCO mol %	85
Solid content weight %	30
Solvent content weight %	70
Weight of hard segment %	35
Weight of PLA diol of the soft segment %	13
Weight of PCL diol of the soft segment %	52

9

10



The TEM image of the waterborne biodegradable polyurethane emulsion is shown in FIG. 1. The waterborne biodegradable polyurethane emulsion was analyzed its particle diameter and surface potential. The results indicated that the particle diameter is 39 ± 9 nm and the Zeta Potential is -58 ± 2 mV. The emulsion is also amphiphilic (hydrophilic and hydrophobic) and negatively charged indicating its anticoagulant ability. The emulsion can also be used to stabilize inorganic nanoparticles such as silver nanoparticles and applied to cell uptake or cell tracking.

Besides, waterborne biodegradable polyurethane emulsion PCL80DL20 can form hydrogel at temperatures higher than 37°C . The tentative image of the waterborne biodegradable polyurethane emulsion in low and high temperature are shown in FIG. 2(a) and FIG. 2(b) and the Rheology analytical result of the waterborne biodegradable polyurethane emulsion is shown in FIG. 2(c). It is shown from the result that the waterborne biodegradable polyurethane emulsion forms hydrogel at approximately 37°C . since $G' > G''$. This characteristic indicates that the waterborne biodegradable polyurethane can be used as drug carrier or gene carrier.

1-3 Membrane Preparation

The 30 wt % waterborne biodegradable polyurethane emulsion was coated onto a glass plate using Spinner at 2300

rpm in 20 seconds. Another appropriate amount of 30 wt % emulsion was placed on Teflon plate and then dried for 72 hours at room temperature (25°C .) and vacuumized for 48 hours at 25°C . in an oven.

Commercial polyurethane (Pellethane 2363-80A, Pellethane, Upjohn) and polylactic acid (PLA, NatureWorks 2002D) were used as control groups in the present embodiment. Pellethane was dissolved in N,N-dimethyl acetamide (DMAc, Tedia) to form a 5 wt % solution. An appropriate amount of the Pellethane solution was placed on glass plate, and the glass plate was dried in an oven at 60°C . for 72 hours then vacuumized at 60°C . for 48 hours. Polylactic acid was dissolved in 1,4-dioxane (Tedia) to form a 10 wt % solution. An appropriate amount of the polylactic acid solution was placed on Teflon plate and the plate was dried in an oven at 60°C . for 72 hours then vacuumized at 60°C . for 48 hours. Thus, the membrane was produced.

According to the procedure above, soft segment of PCL diol mixed with different proportions of PEBA, soft segment of PCL diol mixed with different proportions of PLLA diol, and soft segment of PCL diol mixed with PDLLA diol can be successfully synthesized into waterborne biodegradable polyurethane and can be prepared in the form of membrane without cracking.

11

EXAMPLE 2

Biocompatibility Analysis of the Biodegradable Polyurethane

2-1 Inflammation Test of Macrophage

Murine macrophages (J774A.1) from 30 to 40 generations were used in the present embodiment. Oil-based polyurethane (Pellethane, control group) and the waterborne biodegradable polyurethane subjected to membrane formation and vacuumization were firstly sterilized using 75% ethanol, immersed in phosphate buffered saline (PBS) three times to replace the ethanol, and then place in 24-well corning. The medium used was high glucose Dulbecco's modified Eagle's cell medium (Gibco) containing 10% FBS, 1% PSA, and 1.5 g/L Na₂CO₃. Cells were incubated at the density of 2×10⁴ cell/well at the condition of 37° C. and 5% CO₂ for 24 hours and 72 hours. Cell morphology was observed using microscope and cell diameter was analyzed using Multisizer™ 3 COULTER COUNTER® (Multisizer 3, Beckman Coulter, USA).

As shown in Table 4, the inflammatory response of the waterborne biodegradable polyurethane was tested using murine macrophage. The waterborne biodegradable polyurethane was made in contact with the cells for 24 hours, and the size difference of cells between the waterborne biodegradable polyurethane and TCPS was above 0.4 μm, while the size difference of cells between the waterborne biodegradable polyurethane and the control group, Pellethane, was above 0.5 μm. When the waterborne biodegradable polyurethane was made in contact with the cells for 72 hours, the size difference of the cells between the waterborne biodegradable polyurethane and TCPS remained to be above 0.4 μm, whereas the size difference of the cells between the waterborne biodegradable polyurethane and the control group increased to be above 0.6 μm. Thus, the biodegradable polyurethane membrane is proofed not to activate murine macrophage and result in inflammatory response.

TABLE 4

Cell sizes of murine macrophage cultured using different materials		
Membrane type	Average cell size (μm)	
	24 hours	72 hours
TCPS	15.30 ± 0.40	15.53 ± 0.36
Pellethane	15.42 ± 0.25	15.76 ± 0.55
PCL100	14.90 ± 0.43	15.13 ± 0.61
PCL40EB60	14.71 ± 0.37	15.01 ± 0.46
PCL80LL20	14.64 ± 0.33	14.89 ± 0.54
PCL80DL20	14.64 ± 0.48	14.95 ± 0.49

2-1-1 Gene Expression of the Murine Macrophage Inflammatory-Related Gene

Cell pellet for analysis was washed twice by PBS. 1 mL of trizol (Invitrogen, USA) was added to dissolve the cells and 200 μL of chloroform (Tedia) were added to extract RNA. 500 μL of isopropanol (IT, Backer) were then added to the RNA solution extracted to precipitate RNA. The RNA were collected by centrifugation at 12000 rpm for 15 minutes and washed by 75% EtOH/DEPC solution to replace isopropanol. Finally, RNase-free DEPC-treated water was used to dissolve RNA. The above steps were carried out at 0 to 4° C. and the RNA solution was stored at -20° C. The RNA samples were quantitatively diluted using RNase-free DEPC-treated water and the concentration of RNA was

12

determined by the absorbance of 260 nm and 280 nm measured using visible light/ultra violet light spectrometer (U-2000, Hitachi).

Reverse transcription was performed by using Rever-
5 tAid™ First Strand cDNA Synthesis kit (Fermentas, USA). 0.1 to 0.5 μg of RNA were used according to the quantitative result, and 1 μL of oligo dT were added. RNase-free DEPC-treated water was then added to make the volume up to a total of 12 μL. After reacting at 70° C. for 5 minutes, 4 μL of 5× reaction buffer solution, 1 μL of RiboLock Ribonuclease inhibitor, and 2 μL of 10 mM dNTP were added. After reaction at 37° C. for 5 minutes, 1 μL of RTase were added. Then, reaction was carried out at 42° C. for 60 minutes, and furthermore, at 70° C. for 10 minutes to produce cDNA.

2 μL of 5×PCR Maister, 1 μL of template DNA 1, 1 μL of forward primer, 1 μL of reverse primer, and 17 μL of sterilized deionized water were loaded in 0.2 mL microtube. Thermal cycle (GeneAmp® PCR system 2700, AB, USA) was used. Gene primers were designed as follow: murine IL-1 (forward): CCCAAGCAATACCCAAAGAAGAAG (SEQ ID NO: 1); murine IL-1 (reverse): TGTCTGAC-CACTGTTGTTTCC (SEQ ID NO: 2); murine IL-6 (forward): TTCCATCCAGTTGCCTTCTTG (SEQ ID NO: 3); murine IL-6 (reverse): TCATTTCCACGATTTCCAGAG (SEQ ID NO:4); murine TNF-α (forward): CGAGT-GACAAGCCTGTAGCC (SEQ ID NO: 5); murine TNF-α-32 (reverse): TTGAAGAGAACCTGGGAGTAGAC (SEQ ID NO: 6); murine β-actin (forward): TCCTGTGGCATC-CACGAAACT (SEQ ID NO: 7); murine β-actin (reverse): GGAGCAATGATCCTGATCTTC (SEQ ID NO: 8); bovine eNOS (forward): TAGAATCCCAGCAC-CTTTGGGAATGGCGAT (SEQ ID NO: 9); bovine eNOS (reverse): ATAGAATTGGATTCACTTCTGTGTTGCTG-GACTCCTT (SEQ ID NO: 10); bovine β-actin (forward): AAAGACAGCTATGTGGGAGA (SEQ ID NO: 11); bovine β-actin (reverse): ATGATCTGGGTCATCTTCT (SEQ ID NO: 12). The annealing temperature was set at 55° C. and automated capillary nucleic acid analyzer (eGene, HAD-GT12TM) was used to access the measurement of gene expression.

Capillary electrophoresis was carried out according to the above reverse-transcription polymerase chain reaction to isolate the four sets of genes of β-actin, IL-1 (interleukin-1), IL-6 (interleukin-6), and TNF-α. Data measured were divided by half the quantitative gene expression of normal distribution in the cells to give the immunoassay results.

FIG. 3 indicates the influence of different materials to murine macrophage inflammatory-related gene expression. At 24 hours, comparing with TCPS and Pellethane, the waterborne biodegradable polyurethane exhibits no significant difference regarding Interleukin-1 (IL-1), Interleukin-6 (IL-6), and Tumor necrosis factor-alpha (TNF-α). At 72 hours, although slight increases are observed with waterborne biodegradable polyurethane treated IL-1, IL-6, and TNF-α, the difference is still not significant comparing with TCPS. Hence, the waterborne biodegradable polyurethane of the present invention is proof not to trigger significant inflammatory response.

2-2 In Vitro Degradability Test

The waterborne biodegradable polyurethane subjected to membrane formation and vacuumization was cut into square (5 mm×5 mm) according to the regulation of ISO 10993-13 and immersed in pH 7.4 phosphate buffered saline (PBS). The value of solution value over surface area was adjusted to within the range of 1 to 6 cc/mm² and the solution was placed in oven with constant temperature of 50° C. After 7, 14, 21, and 28 days, the waterborne biodegradable polyure-

thane was collected and the surface was washed using double-distilled water. The washed waterborne biodegradable polyurethane was then placed in oven to dry for 24 hours at 50° C. following vacuumization for another 24 hours. The weights of the waterborne biodegradable polyurethane before and after the experiment were measured and the remaining percentage by weight was calculated according to Formula 1.

The waterborne biodegradable polyurethane subjected to membrane formation and vacuumization was cut into square (1 cm×1 cm) and immersed in 3 wt % sodium hydroxide (NaOH) and placed in oven with a constant temperature of 37° C. After 4, 8, 12, and 24 hours, the waterborne biodegradable polyurethane was collected and the surface was washed using double-distilled water. The washed waterborne biodegradable polyurethane was then placed in oven to dry for 24 hours at 37° C. following vacuumization for another 24 hours. The weights of the waterborne biodegradable polyurethane before and after the experiment were measured and the remaining percentage by weight was calculated according to Formula 1.

$$\text{Remaining percentage by weight (\%)} = \text{Wt}/\text{Wo} \times 100\% \quad \text{Formula 1}$$

Wo is the starting weight (g); Wt is the washed and dried weight after degradation

On the other hand, polycaprolactone diol and polyethylene butylene adipate diol in the ratio of 60:40 and 80:20, as well as polycaprolactone diol and poly-L-lactide diol in the ratio of 40:60 and 60:40 were made into waterborne biodegradable polyurethane respectively according to the same method disclosed above for comparison.

The accelerated degradation test of the waterborne biodegradable polyurethane with PBS at 50° C. is shown in FIG. 4. The higher the proportion of PEBA diol, the faster the degradation rate of the waterborne biodegradable polyurethane when the soft segment was made of PCL diol and PEBA diol, which results in a remaining weight percentage between 84 to 45 wt % after 28 days. The higher the proportion of PLLA diol, the faster the degradation rate of the waterborne biodegradable polyurethane when the soft segment was made of PCL diol and PLLA diol, which results in a remaining weight percentage between 84 to 55 wt % after 28 days. The higher the proportion of PDLLA diol, the faster the degradation rate of the waterborne biodegradable polyurethane when the soft segment was made of PCL diol and PDLLA diol, which results in a remaining weight percentage between 84 to 71 wt % after 28 days. In addition, the accelerated degradation test of the waterborne biodegradable polyurethane with 3 wt % NaOH is shown in FIG. 5. The higher the proportion of PEBA diol, the faster the degradation rate of the waterborne biodegradable polyurethane when the soft segment was made of PCL diol and PEBA diol, which results in a remaining weight percentage between 83 to 57 wt % after 24 hours. The higher the proportion of PLLA diol, the faster the degradation rate of the waterborne biodegradable polyurethane when the soft segment was made of PCL diol and PLLA diol, which results in a remaining weight percentage between 83 to 26 wt % after 24 hours. The higher the proportion of PDLLA diol, the faster the degradation rate of the waterborne biodegradable polyurethane when the soft segment was made of PCL diol and PDLLA diol, which results in a remaining weight percentage between 83 to 44 wt % after 24 hours.

The in vitro degradation rates of soft segments made of PCL diol and PEBA diol in PBS and NaOH are rated as follow: PCL40EB60>PCL60EB40>PCL80EB20>PCL100. The in vitro degradation rates of soft segments made of PCL

diol and PLLA diol in PBS and NaOH are rated as follow: PCL40LL60>PCL60LL40>PCL80LL20>PCL100. The in vitro degradation rates of soft segments made of PCL diol and PDLLA diol in PBS and NaOH are rated as follow: PCL80DL20>PCL60LL40>PCL80LL20>PCL100.

2-3 Degradability Test of Murine Subcutaneous Implantation

The waterborne biodegradable polyurethane subjected to membrane formation and vacuumization was cut into square (10 mm×10 mm×0.2 mm), sterilized by 75% ethanol, and then immersed in PBS three times to replace the ethanol. After gas anesthesia, 10 mm×10 mm subcutaneous incisions were done on both side of the spine of adult Sprague-Dawley (SD) rat and the waterborne biodegradable polyurethane membrane of the present invention was implanted. After carbon dioxide euthanasia after 29 days, the implanted waterborne biodegradable polyurethane membrane was collected, washed by double-distilled water, and vacuumed for 24 hours. The weights of the waterborne biodegradable polyurethane membrane before and after implantation were measured and the remaining percentage of weight was calculated according to Formula 1. The molecular weights of the waterborne biodegradable polyurethane membrane before and after implantation were measured using gel permeation chromatography (GPC, Waters apparatus) and the remaining percentage of molecular weight was calculated according to Formula 2. In addition, Scanning Electron Microscope (SEM, Hitachi S-4800) was used to observe the surface changes of the waterborne biodegradable polyurethane membrane before and after implantation.

$$\text{Remaining percentage of molecular weight (\%)} = \text{Mt}/\text{Mo} \times 100\% \quad \text{Formula 2}$$

Mo is the starting molecular weight (Mw); Mt is the washed and dried molecular weight after degradation

After 29 days of murine subcutaneous implantation, small pores can be seen on the surface of the waterborne biodegradable polyurethane and the diameter of the pores seen on the PLA surface is approximately 5 μm. PCL80DL20 generates more pores during in vivo degradation. Please refer to FIG. 6 for the remaining percentage of weight and the remaining percentage of molecular weight before and after implantation. The least remaining percentage of weight measured are PLA (55.25%) and PCL80DL20 (56.03%) indicating the fastest degradation, whereas the higher remaining percentage of weight measured is PCL 100 (85.66%) indicating a slower degradation. Regarding the remaining percentage of molecular weight before and after implantation, the remaining percentage of molecular weight of PLA (19.84%) is the least, the remaining percentage of molecular weight of PCL80DL20 (22.13%) is slight higher, and the remaining percentage of molecular weight of PCL100 (65.27%) is the highest, indicating the slowest degradation rate. The in vivo degradation rate is rated as follows:

$$\text{PLA PCL80DL20} > \text{PCL40EB60} > \text{PCL80LL20} > \text{PCL100.}$$

EXAMPLE 3

Preparation of scaffold

3-1 Scaffold Preparation by Electrospinning

An electrospinning device was constructed by using high voltage power supplier (YSTC), syringe pump (KDS-100, KD Scientific, USC), and spinneret (20G, TERUMO). The

waterborne biodegradable polyurethane subjected to membrane formation was dissolved in acetone (Tedia) to prepare 10 to 25 wt % solution and loaded into the syringe pump. The high voltage power supplier was attached with one end to the spinneret and the other to the collector. The flow speed of the syringe and the voltage were set at 10 to 17 $\mu\text{L}/\text{min}$ and 7 to 9 kV, respectively. A layer of aluminum foil or glass plate could be placed on the collector to allow the operating distance between the tip of the spinneret and the collector to be 19 cm. The electrospinning nano/micro fiber could then be collected on the aluminum foil or glass plate and followed by vacuumization at 25° C. for 48 hours. On the other hand, poly(D,L-lactide) (molecular weight=121140 Da, low crystalline, Ingeo 2002D, NatureWorks) was dissolved in cosolvent, acetone (Tedia) and 1,4-dioxane (Tedia) and loaded into the syringe. For collecting electrospinning fiber, the flow speed, voltage, and operating distance between the tip of the spinneret and the collector were set at 10 $\mu\text{L}/\text{min}$, 9 kV, and 19 cm, respectively. Detailed parameters of the electrospinning fiber are shown in Table 5.

TABLE 5

Parameters of the electrospinning fiber						
Electrospinning fiber parameters						
Sample	Biodegradable polyurethane (wt %)	Acetone (wt %)	1,4-dioxane (wt %)	Voltage (kV)	Flow speed ($\mu\text{L}/\text{min}$)	Operating distance (cm)
PCL100	10	90	—	7.1	15	19
PCL40EB60	18	82	—	7.1	10	19
PCL80LL20	10	90	—	7.1	15	19
PCL80DL20	25	75	—	7.1	17	19
PLA	10	36	54	9.0	10	19

The electrospinning fiber obtained by macromolecular solution containing waterborne biodegradable polyurethane, acetone and polylactic acid, acetone, and 1,4-dioxane under conditions of 10 to 17 $\mu\text{L}/\text{min}$ in flow speed and 7 to 9 kV in voltage is shown in FIG. 7 in which the electrospinning fiber is thin and fibrous without any occurrence of beads. The diameter of PCL100^s/acetone (10/90 wt %) is 1.57 \pm 0.35 μm ; the diameter of PCL40EB60^s/acetone (18/82 wt %) is 1.40 \pm 0.38 μm ; the diameter of PCL80LL20^s/acetone (10/90 wt %) is 1.70 \pm 0.36 μm ; the diameter of PCL80DL20^s/acetone (25/75 wt %) is 1.42 \pm 0.21 μm ; the diameter of PLA^s/acetone/1,4-dioxane (10/36/54 wt %) is 1.24 \pm 0.66 μm .

Moreover, nano fiber with 457.5 \pm 44.7 μm in diameter can be fabricated by incorporating polyethylene oxide (PEO) into waterborne biodegradable polyurethane emulsion and undergoing electrospinning directly.

3-2 Scaffold Preparation by Freeze Drying

3-2-1 Preparation by Freeze Drying

10 mL of 30 wt % waterborne biodegradable polyurethane emulsion was placed onto Teflon plate and froze at -20° C. for 24 hours. Then a membrane with thickness of 2 to 3 mm was obtained after freeze drying using freeze dryer (FDU-1200, Eyela, Japan) for 24 hours.

The structures of the surface and cross-section of the membrane formed are shown in FIG. 8. For PCL100^s freeze dried membrane, the diameter of the pore on the surface is 8.04 \pm 2.24 μm and the diameter of the pore on the cross-section is 52.05 \pm 19.28 μm ; for PCL40EB60^s freeze dried membrane, the diameter of the pore on the surface is 12.74 \pm 4.06 μm and the diameter of the pore on the cross-section is 38.51 \pm 16.63 μm ; for PCL80LL20^s freeze dried

membrane, the diameter of the pore on the surface is 8.86 \pm 3.99 μm and the diameter of the pore on the cross-section is 48.61 \pm 20.33 μm ; for PCL80DL20^s freeze dried membrane, the diameter of the pore on the surface is 25.91 \pm 9.04 μm and the diameter of the pore on the cross-section is 53.70 \pm 25.25 μm ; for PLA^s freeze dried membrane, the diameter of the pore on the surface is 49.45 \pm 9.04 μm and the diameter of the pore on the cross-section is 65.48 \pm 10.42 μm . It is shown that the diameters of the pores on the surface and the cross-section are mostly within the range of the diameter of vascular graft endothelialization.

In addition, foams (as shown in FIG. 9) are formed by diluting the waterborne biodegradable polyurethane emulsion followed by freeze drying procedure. The pores of the foam are larger and more abundant and are distributed in an asymmetrical manner. The mechanical strength is regardless of dilution, however, with diluted waterborne biodegradable polyurethane emulsion, the flexibility is better.

3-2-2 Preparation by Particle-Leaching Method and Freeze Drying

Additionally, particle-leaching method was applied. Waterborne biodegradable polyurethane and PLA (Mw=121.4 kDa, low crystalline, Ingeo 2002D, NatureWorks) subjected to membrane formation were separately dissolved using solvent, 1,4-dioxane (Tedia) to form homogeneous macromolecular solution of PLA/1,4-dioxane (5/95 wt %). Firstly, glucose source was vacuumized for 12 hours at 60° C. using a vacuum oven in a sealed heating environment. Then further vacuumized at 22 to 25° C. for 12 hours. Two sieves (ASTM E 11-79 No. 50 and 140) were used to select glucose particle of 100 to 300 μm in diameter to serve as porogen under condition of below 20% RH. 2 mL of the solution were placed into a cylinder container (diameter=20 mm; thickness=10 mm) having 2 g of sugar particle (D(+)-glucose anhydrous, Showa, particle diameter=100 to 300 μm) for 30 minutes, then froze at -20° C. for 24 hours. After further freeze dried for 24 hours using freeze dryer (FDU-1200, Eyela, Japan), samples (diameter=20 mm; thickness=5 mm) were taken from the cylinder container and immersed in water for 24 hours. The water was renewed every 30 minutes during the process. After the sugar particle and the remaining solvent were fully dissolved in water, samples were taken from the water and then freeze dried again for 24 hours using freeze dryer to yield samples of 3 to 4 mm in thickness. Samples were further cut into cylinder with a diameter of 15 mm using casting knife (diameter=15 mm).

The structures of the surface and cross-section are shown in FIG. 10. For PCL100^s freeze dried scaffold, the diameter of the pore on the surface is 160.25 \pm 7.49 μm and the diameter of the pore on the cross-section is 139.08 \pm 14.75 μm ; for PCL40EB60^s freeze dried scaffold, the diameter of the pore on the surface is 171.79 \pm 20.92 μm and the diameter of the pore on the cross-section is 186.68 \pm 29.27 μm ; for PCL80LL20^s freeze dried scaffold, the diameter of the pore on the surface is 207.06 \pm 18.04 μm and the diameter of the pore on the cross-section is 152.82 \pm 20.46 μm ; for PCL80DL20^s freeze dried scaffold, the diameter of the pore on the surface is 162.68 \pm 4.17 μm and the diameter of the pore on the cross-section is 149.60 \pm 11.71 μm ; for PLA^s freeze dried scaffold as the control group, the diameter of the pore on the surface is 147.25 \pm 13.79 μm and the diameter of the pore on the cross-section is 147.22 \pm 10.23 μm . It is shown that the diameters of the pores on the surface and the cross-section are also mostly within the range of the diameter of vascular graft endothelialization.

3-3 Mechanical Properties of the Membrane

Different waterborne biodegradable polyurethane membranes subjected to membrane formation were cut into dumb-bell shape using standard mold (length=20 mm; width=1 mm) For measuring the thickness of the samples, firstly, both edges of the samples were clamped tightly using fixing clamps, then tensile test was carried out at a constant elongation speed set at 100 mm/min using universal tension machine (HT-8504, HungTa). According to stress-strain diagram, the Young's modulus, tensile strength, and elongation could be determined to compare the physical strength of each material.

The Young's modulus of the waterborne biodegradable polyurethane is between 0.5 to 40 MPa, while the tensile strength of the waterborne biodegradable polyurethane is between 5 to 50 MPa. The tensile strength of the pore-less membrane is greater than 400%, while the tensile strength of the porous membrane is greater than 220%. Preferred data of waterborne biodegradable polyurethane are shown in Table 6.

TABLE 6

Sample	Young's modulus (MPa)	100% Modulus (MPa)	Tensile strength (MPa)	Elongation (%)
PCL100	30.9 ± 7.9	5.3 ± 0.1	34.9 ± 3.1	535.5 ± 19.7
PCL40EB60	29.9 ± 1.9	4.6 ± 0.3	25.7 ± 5.3	517.2 ± 10.8
PCL80LL20	23.2 ± 1.6	6.2 ± 0.3	28.0 ± 3.4	581.1 ± 4.2
PCL80DL20	4.6 ± 0.7	3.8 ± 0.2	12.6 ± 3.9	655.5 ± 17.5
PCL100 ^f	5.6 ± 0.9	1.6 ± 0.4	2.2 ± 0.8	222.0 ± 25.6
PCL40EB60 ^f	5.0 ± 0.7	1.4 ± 0.2	2.9 ± 0.2	279.0 ± 14.8
PCL80LL20 ^f	8.6 ± 0.4	2.4 ± 0.3	3.8 ± 0.3	279.8 ± 5.8
PCL80DL20 ^f	1.5 ± 0.4	1.6 ± 0.4	2.5 ± 0.5	287.8 ± 26.4

The waterborne biodegradable polyurethane with soft segment made of PCL diol and PEBA diol, represented as PCL60EB40, exhibits Young's modulus between 24.3 to 33.4 MPa, tensile strength between 25.7 to 34.9, and elongation between 512.7 to 537.4%. The Young's modulus and tensile strength decreases with the increase of PEBA diol proportion, while the elongation shows no significant changes.

The waterborne biodegradable polyurethane with soft segment made of PCL diol and PLLA diol exhibits Young's modulus between 23.20 to 131.50 MPa, tensile strength between 11.0 to 34.9 MPa, and elongation between 190.0 to 581.1%. With the increase of PLLA diol proportion under a prepolymerization temperature of 95° C., Young's modulus shows a tendency to decrease and then increase, while tensile strength decreases significantly. Elongation, on the other hand, shows a tendency to increase and then decrease.

The waterborne biodegradable polyurethane with soft segment made of PCL diol and PDLLA diol exhibits Young's modulus between 4.6 to 31.0 MPa, tensile strength between 12.6 to 34.9 MPa, and elongation between 535.5 to 655.5%. With the increase of PDLLA diol proportion, Young's modulus and tensile strength decrease significantly, whereas elongation shows a significant increase. Overall, PCL100, PCL40EB60, PCL80LL20, and PCL80DL20 are the preferred elastomer having mechanical properties.

As shown in Table 6, freeze dried membrane exhibits Young's modulus between 1.5 to 8.6 MPa, tensile strength between 2.2 to 3.8 MPa, and elongation between 220.0 and 287.8%. Scaffold prepared by directly freeze drying the waterborne biodegradable polyurethane exhibits a great

margin of decrease regarding all Young's modulus, tensile strength, and elongation comparing to membrane dried in room temperature.

3-4 Scaffold Surface Modification

The freeze dried waterborne biodegradable polyurethane membrane and a polylactic acid membrane were used. Sulfonated chitosan (Mw=140 kDA, deacetylation degree=95%, sulfonation degree=99%) was grafted using atmospheric-pressure plasma (San Fang Machinery Co., Ltd., Model Type: FH3001+HTR1001+RD1004) with air mixture of 20% oxygen and 80% nitrogen and inlet pressure of 2.5 kg/cm². The height of nozzle and the speed of platform movement were set at 20 mm and 15 m/min, respectively. After scanning by atmospheric-pressure plasma, biological solution of chitosan derivatives (2 wt %) were quickly coated onto the membrane to allow reaction to take place for 30 minutes, then the membrane was washed by double-distilled water and dried. The surface characteristics after grafting were analyzed by contact angle (FTA-1000B, First Ten Angstrom Company, USA), Attenuated Total Reflection Fourier Infrared Spectroscopy (spectrum 100 model, Perkin Elmer), and Scanning Electronic Microscopy (JEOL-JSM-7600).

As shown in FIG. 11, the peak absorption of the freeze dried waterborne biodegradable polyurethane membrane is 1550 cm⁻¹ for NH₂, 1470 cm⁻¹ for CH₂, 1240 cm⁻¹ for S=O (sulfonic acid), 1160 cm⁻¹ for S=O (sulfone), 1040 cm⁻¹ for S=O (sulfoxide), and 780 cm⁻¹ for C—O—S, whereas the peak absorption of the freeze dried polylactic acid membrane is 1040 cm⁻¹ for S=O (sulfoxide) with a significant increase in absorption peak intensity. On the other hand, regarding the contact angle, PCL100 with surface modified by sulfonated chitosan decreases to 53.7±1.5°, PCL40EB60 with surface modified by sulfonated chitosan decreases to 54.4±3.5°, PCL80LL20 with surface modified by sulfonated chitosan decreases to 57.2±2.5°, PCL80DL20 with surface modified by sulfonated chitosan increases to 52.1±2.1°, and PLA with surface modified by sulfonated chitosan decreases significantly to 48.3±3.6°. Hence, it is proved that sulfonated chitosan can be successfully grafted on to the surface of the freeze dried waterborne polyurethane membrane of the present invention.

EXAMPLE 4

Biocompatibility Test of the Scaffold

4-1 Adhesion and Proliferation of Endothelial Cells

Bovine carotid artery endothelial cells (BEC) from 9 to 15 generations were used. All waterborne biodegradable polyurethane electrospinning fiber (diameter=15 mm), freeze dried membrane (diameter=15 mm), and surface modified membrane (diameter=15 mm) were firstly sterilized using 75% ethanol and immersed in phosphate buffered saline (PBS) three times to replace the ethanol, then were placed in 24-well corning with an addition of silicon 0-shaped ring (inner diameter=13 mm), thickness=1 mm) located above. LG-DMEM cell culture medium was used and cells were incubated at the density of 2×10⁴ cell/well at the condition of 37° C. and 5% CO₂ for 24 hours and 72 hours. Cell morphology was observed using microscope, while the adhesion rate at 24 hours and the proliferation rate at 72 hours were calculated using DNA analog.

The cell calibration was plotted. The cell solution was set to 5 to 7 concentration gradients and 1 mL of each concentration was freeze dried for 12 hours and then dissolved in 1.5 mL of decomposition solution (55 mM sodium citrate,

150 mM sodium chloride, 5 mM cysteine HCL, 5 mM EDTA, 1 mg/21 mL papain) at 60° C. for 24 hours. After dissolving, 0.5 mL of the solution were taken and added to 5 mL of dye (10 mM Tris, 1 mM Na2DETA, 0.1 mM sodium chloride, 0.1 g/mL Hoechst). Fluorophotometer was used to detect the fluorescence intensity (Excitation wavelength=365 nm, Emission wavelength=458 nm). Standard curve of cell quantity was plotted by fluorescence intensity against cell concentration, and the amount of cells was calculated according to this standard curve.

FIG. 12 represents the results of cell adhesion and proliferation of endothelial cells using different electrospinning fibers. No significant difference regarding cell adhesion can be seen at 24 hours, however, after 72 hours, the growth and elongation of the endothelial cells along the waterborne biodegradable polyurethane electrospinning fiber can be observed. PCL80DL20^e results in the highest proliferation rate.

FIG. 13 represents the results of cell adhesion and proliferation of endothelial cells using different freeze dried membrane. At 24 hours, the cell adhesion rate of the freeze dried waterborne biodegradable polyurethane membrane are all significantly higher than the cell adhesion rate of PLA^f, however, shows no significant difference comparing to TCPS. The cell proliferation rate of biodegradable polyurethane is still higher than the cell proliferation rate of PLA^f, PCL100f and PCL80LL20^f, in particular, are higher than TCPS.

FIG. 14 represents the result of cell adhesion and proliferation of endothelial cells using different surface modified and freeze dried membrane. At both 24 hours and 72 hours, the cell adhesion rate and proliferation rates of the surface modified and freeze dried membrane show no significant difference comparing to PLA^f-ASC. The proliferation rate of PCL80LLD20^f-ASC is the highest.

4-2 Seeding Rate of Adipose-Derived Stem Cell

Rat adipose-derived adult stem cells from 3 to 5 generations were used. The freeze dried waterborne biodegradable polyurethane scaffold was sterilized using ultraviolet light for an hour and placed into 24-well corning. Low glucose DMEM/F12 (low glucose Dulbecco's modified Eagle's medium/nutrient mixture F-12, DEME-LG/F12=1:1, Gibco) cell culture medium containing 10% FBS, 1% PS, and 1.5 g/L Na₂CO₃ were used and the density of seeding cell concentrate was 150×10⁴ cells/μL. With additions of 5 μL culture medium after 5 minutes, 100 μL culture medium after 10 minutes, and 200 μL culture medium after 30 minutes followed by continuous addition of 200 μL culture medium each hour, the total volume was adjusted to 1 mL. Cells were then incubated for 24 hours under conditions of 37° C. and 5% CO₂.

The freeze dried scaffold after incubation with cells was freeze dried for 12 hours, then 1.5 mL of decomposition solution were added at 60° C. and the reaction was allowed to take place for 24 hours. 0.5 mL of the solution after decomposition were added to 5 mL of dye and the fluorescence intensity (Excitation wavelength=365 nm, Emission wavelength=458 nm) was measured using fluorophotometer. The amount of cells was calculated according to the standard curve, while the seeding rate was calculated according to Formula 3.

$$\text{Seeding rate (\%)} = \frac{NE - N}{N} \times 100$$

Formula 3

NE is the number of cells after culturing for 24 hours, and N is 150×10⁴ cells.

rADAS was used to test the seeding rate, and as shown in FIG. 15, the seeding rate of PCL100^e, PCL40EB60^e,

PCL80LL20^e, and PCL80DL20^e scaffold were all greater than 90%, whereas the minimum seeding rate of PLC scaffold is 63.9±8.4%. Besides, the seeding rate of PCL80LL20^e and PCL80DL20^e are 127.4±23.7% and 118.1±25.8%, respectively, indicating that cells can be successfully seeded onto scaffold, and can survive and proliferate without the requirement of wet condition.

4-3 Adhesion of Blood Platelet

The freeze dried waterborne biodegradable polyurethane membrane and surface modified membrane were cut into appropriate size and were attached to aluminum plate (diameter=2.4) using double adhesive tape. Then the plate was immersed in Hepe-Tyrodes buffer solution for an hour. After the buffer solution was discharged, blood platelet concentrate was added to fully cover the aluminum plate and allowed to settle in 5% CO₂ incubation chamber for an hour. Blood platelets that did not adhere to the aluminum plate were washed away by washing with Hepe-Tyrodes buffer for three times, and then Hepes solution containing 2% (v/v) glutaraldehyde (Riedel-deHaen) were added. Blood platelets were fixed for 30 minutes and Hepes-Tyrode/double-distilled water solutions with concentration gradient were used to immerse the plate for 1 minute to eliminate the salt on the surface. Same concentration gradient was applied and replaced with ethanol, and the plate was freeze dried using freeze dryer (FDU-1200, Eyela, Japan). Finally, the activation condition of the blood platelet adhered onto the surface of the plate was observed using scanning electron microscope (SEM, S-4800, Hitachi).

The amount of blood platelet adhered onto the surface and their activation degree before and after modifying the surface by sulfonated chitosan can be used as indications for blood compatibility. As shown in FIG. 16, considerable adhesion and activation of blood platelet can be observed before the surface modification, and PLA^f, in particular, is significantly higher than the others. A tendency to decrease regarding blood platelet adhesion and activation can be observed after the surface modification, wherein PCL40EB60^f-ASC is not significantly different from PLA^f-ASC; PCL100^f-ASC, PCL80LL20^f-ASC, and PCL80DL20^f-ASC are significantly lower than PLA^f-ASC. Particularly, PCL80LL20^f-ASC and PCL80DL20^f-ASC show negligible blood platelet adhesion and activation, indicating that the modification does not result in blood coagulation.

The amounts of blood platelet adhesion before surface modification are rated as follow: PLA^f>PCL40EB60^f>PCL100^f>PCL80LL20^f PCL80DL20^f; the levels of blood platelet activation are rated as follow: PCL40EB60^f>PLA^f>PCL100^f≈PCL80LL20^f≈PCL80DL20^f.

The amounts of blood platelet adhesion after surface modification are rated as follow: PLA^f-ASC≈PCL40EB60^f-ASC>PCL100^f-ASC>PCL80DL20^f-ASC≈PCL80LL20^f-ASC.

The levels of blood platelet activation are rated as follow: PLA^f-ASC>PCL40EB60^f-ASC≈PCL100^f-ASC>PCL80DL20^f-ASC≈PCL80LL20^f-ASC.

Thus, according to the above embodiments, compositions of PCL40EB60, PCL80LL20, and PCL80DL20 are found to be capable of being made into waterborne biodegradable polyurethane emulsion in Example 1. Example 1 also further instructs the emulsion being made into biocompatible and biodegradable polyurethane in the form of membrane. Example 2 discloses that the inflammatory response caused by the membrane is not significant and proofs that, via in vitro and in vivo degradation test, the biocompatible and biodegradable polyurethane exhibit biocompatibility and

21

biodegradability. According to Example 3, by using electro-spinning, freeze drying, and particle-leaching/freeze drying, scaffolds with diameters of pores on the surface and the cross-section sit within the range of the diameter of vascular graft endothelialization can be prepared. Example 4 further proves that the scaffold made in Example 3 does not possess significant blood coagulation function. Moreover, cells such as endothelial cells and adipose-derived stem cells can successfully implant onto the scaffold and proliferate, indicating biocompatibility, hence, being one ideal material for vascular graft.

In addition, the waterborne biodegradable polyurethane was also prepared in the form of structurally opened 3D scaffold with stacking regular micropillar (as shown in FIG. 17). Micropores with diameter of $1.94 \pm 0.6 \mu\text{M}$ were also found to be spreading along each nanopillar. Pores of this size are beneficial for the maintenance of cell morphology, thus can be applied to sophisticated cell scaffold.

To understand whether the abovementioned scaffold is suitable for the incubation of mesenchymal stem cell, polyurethane sophisticated scaffold were sterilized for a day using ultraviolet light. Then, mesenchymal stem cells were used to carry out the cell seeding experiment. Adipose-derived stem cells were extracted from rat adipose tissue, in which 1×10^6 cells were suspended in 20 mL of culture solution to form a cell concentrate. The cell concentrate was then seeded onto polyurethane scaffold and incubated for 4 hours. Finally, 3 mL of culture solution were added and the incubation was allowed to proceed for another 20 hours. DNA dye Hoechst 33258 was used to perform cell count. The results indicate that after 24 hours of incubation, the number of cells is between 8.59×10^5 to 8.77×10^5 and the seeding rate is $86.8 \pm 0.9\%$, showing that the scaffold is suitable for the incubation of mesenchymal stem cells such as adipose-derived stem cells.

22

EXAMPLE 5

Microsphere Prepared by Using the Waterborne Biodegradable Polyurethane Emulsion

Spraying process can be applied to the preparation of waterborne biodegradable polyurethane microsphere, for instance, directly spray the waterborne biodegradable polyurethane into liquefied nitrogen then undergo freeze drying. This process can also be incorporated by thermal-induced phase separation (TIPS) and wet-phase separation. The microsphere prepared has diameter of 20 to 60 μm with microporous structure.

To test the ability of microsphere as a drug carrier, firstly, methylene blue was mixed with waterborne biodegradable polyurethane PCL40EB60 and PCL 100. Then, microspheres having diameter of 20 μm were formed according to the above method. The microspheres having methylene blue were immersed in phosphate buffered saline (PBS) at 37° C. for 2, 4, 8, 12, 24, 48, and 72, hours, respectively. Then UV/vis spectrometer was used to measure the absorption at 660 nm for quantification. As shown in FIG. 18, the result of drug release of the microsphere, the amount of drug released of PCL40EB60 microsphere is much higher than the amount of drug released of PCL100 microsphere, however, both PCL40EB60 microsphere and PCL100 microsphere have drug carrying capabilities.

In addition, the cell carrying capability of the microsphere was tested. L929 cell was loaded at a density of 1×10^5 cells/well. PCL100 microsphere was added (0.1 g/well) or TCPS was applied. The cells were then incubated under conditions of 37° C. and 5% CO₂ for 24 hours and 72 hours followed by observation of the number of cells. As shown in the result of FIG. 19, the number of cells incubated with PCL100 microsphere is significantly higher than the number of cells incubated by TCPS, indicating that PCL100 microsphere has cell carrying capability.

SEQUENCE LISTING

<160> NUMBER OF SEQ ID NOS: 12

<210> SEQ ID NO 1
 <211> LENGTH: 24
 <212> TYPE: DNA
 <213> ORGANISM: Artificial sequence
 <220> FEATURE:
 <223> OTHER INFORMATION: murine IL-1 primer (forward)

<400> SEQUENCE: 1

cccaagcaat acccaagaa gaag

24

<210> SEQ ID NO 2
 <211> LENGTH: 22
 <212> TYPE: DNA
 <213> ORGANISM: Artificial sequence
 <220> FEATURE:
 <223> OTHER INFORMATION: murine IL-1 primer (reverse)

<400> SEQUENCE: 2

tgtcctgacc actgtgtttt cc

22

<210> SEQ ID NO 3
 <211> LENGTH: 21
 <212> TYPE: DNA
 <213> ORGANISM: Artificial sequence

-continued

<220> FEATURE:
 <223> OTHER INFORMATION: murine IL-6 primer (forward)

<400> SEQUENCE: 3

ttccatccag ttgccttctt g 21

<210> SEQ ID NO 4
 <211> LENGTH: 22
 <212> TYPE: DNA
 <213> ORGANISM: Artificial sequence
 <220> FEATURE:
 <223> OTHER INFORMATION: murine IL-6 primer (reverse)

<400> SEQUENCE: 4

tcatttccac gatttcccag ag 22

<210> SEQ ID NO 5
 <211> LENGTH: 20
 <212> TYPE: DNA
 <213> ORGANISM: Artificial sequence
 <220> FEATURE:
 <223> OTHER INFORMATION: murine TNF- \ primer (forward)

<400> SEQUENCE: 5

cgagtgacaa gcctgtagcc 20

<210> SEQ ID NO 6
 <211> LENGTH: 23
 <212> TYPE: DNA
 <213> ORGANISM: Artificial sequence
 <220> FEATURE:
 <223> OTHER INFORMATION: murine TNF- \-32-primer (reverse)

<400> SEQUENCE: 6

ttgaagagaa cctgggagta gac 23

<210> SEQ ID NO 7
 <211> LENGTH: 21
 <212> TYPE: DNA
 <213> ORGANISM: Artificial sequence
 <220> FEATURE:
 <223> OTHER INFORMATION: murine]-actin primer (forward)

<400> SEQUENCE: 7

tcctgtggca tccacgaaac t 21

<210> SEQ ID NO 8
 <211> LENGTH: 21
 <212> TYPE: DNA
 <213> ORGANISM: Artificial sequence
 <220> FEATURE:
 <223> OTHER INFORMATION: murine]-actin primer (reverse)

<400> SEQUENCE: 8

ggagcaatga tcctgatctt c 21

<210> SEQ ID NO 9
 <211> LENGTH: 31
 <212> TYPE: DNA
 <213> ORGANISM: Artificial sequence
 <220> FEATURE:
 <223> OTHER INFORMATION: bovine eNOS primer (forward)

<400> SEQUENCE: 9

tagaattccc agcacctttg ggaatggcga t 31

-continued

```

<210> SEQ ID NO 10
<211> LENGTH: 37
<212> TYPE: DNA
<213> ORGANISM: Artificial sequence
<220> FEATURE:
<223> OTHER INFORMATION: bovine eNOS primer (reverse)

<400> SEQUENCE: 10

atagaattgg attcacttct gtgttgctgg actcctt                37

<210> SEQ ID NO 11
<211> LENGTH: 20
<212> TYPE: DNA
<213> ORGANISM: Artificial sequence
<220> FEATURE:
<223> OTHER INFORMATION: bovine ]-actin primer (forward)

<400> SEQUENCE: 11

aaagacagct atgtgggaga                20

<210> SEQ ID NO 12
<211> LENGTH: 19
<212> TYPE: DNA
<213> ORGANISM: Artificial sequence
<220> FEATURE:
<223> OTHER INFORMATION: bovine ]-actin primer (reverse)

<400> SEQUENCE: 12

atgatctggg tcactcttct                19

```

What is claimed is:

1. A waterborne biocompatible and biodegradable elastomer, comprising: a main chain of polyurethane comprising a hard segment and a soft segment, the hard segment is formed by reaction of diisocyanate, 2,2-bis(hydroxymethyl)propionic acid and a chain extender, and the soft segment is a biodegradable oligomer diol, wherein the biodegradable oligomer diol is made of a polycaprolactone diol and a diol selected from the group consisting of polyethylene butylene adipate diol, polylactic acid diol, and any combinations thereof; and
 - wherein the molar ratio of diisocyanate: soft segment: 2,2-bis(hydroxymethyl)propionic acid: chain extender of the product is 3-4:1:1-2:1.52.
2. The waterborne biocompatible and biodegradable elastomer of claim 1, wherein the polylactic acid diol is L-lactic acid or DL-lactic acid.
3. The waterborne biocompatible and biodegradable elastomer of claim 1, wherein when the soft segment is consisted of polycaprolactone diol and polyethylene butylene adipate diol, the polycaprolactone diol is in an amount of greater than 0.3 molar fraction of the degradable oligomer diol.
4. The waterborne biocompatible and biodegradable elastomer of claim 1, wherein when the soft segment is consisted of polycaprolactone diol and polylactic acid diol, the polycaprolactone diol is in an amount of greater than 0.4 molar fraction of the degradable oligomer diol.
5. The waterborne biocompatible and biodegradable elastomer of claim 1, wherein when the soft segment is consisted of polycaprolactone diol and polylactic acid diol, the polycaprolactone diol is in an amount of greater than 0.8 molar fraction of the degradable oligomer diol.
6. The waterborne biocompatible and biodegradable elastomer of claim 1, wherein the diisocyanate is alicyclic polyisocyanate.
7. The waterborne biocompatible and biodegradable elastomer of claim 6, wherein the alicyclic polyisocyanate is isophorone diisocyanate.
8. The waterborne biocompatible and biodegradable elastomer of claim 1, wherein the chain extender is ethylenediamine.
9. The waterborne biocompatible and biodegradable elastomer of claim 1, wherein the amount of the soft segment is between 45% and 75% w/w of the total weight of the elastomer.
10. A waterborne biocompatible and biodegradable elastic membrane made of the biocompatible and biodegradable elastomer of claim 1, wherein the Young's modulus of the biodegradable elastic membrane is greater than 0.5 MPa and smaller than 40 MPa.
11. The waterborne biocompatible and biodegradable elastic membrane of claim 10, wherein the tensile strength of the biodegradable elastic membrane is greater than 5 MPa.
12. The waterborne biocompatible and biodegradable elastic membrane of claim 1, wherein the elongation of the biodegradable elastic membrane is greater than 400%.
13. A vascular graft made of the waterborne biocompatible and biodegradable elastomer of claim 1, wherein a plurality of pores are present on the wall of the vascular graft with an average pore diameter on the outer surface is between 5 to 50 μm , and an average pore diameter on the cross-section is between 10 to 100 μm .
14. The vascular graft of claim 13, the elongation of the vascular graft is greater than 220%.
15. The vascular graft of claim 13, wherein the pores are made by using freeze drying.
16. The vascular graft of claim 13, wherein the pores are made by using particle-leaching method.

17. The vascular graft of claim 13, wherein the surface of the wall of the vascular graft is chemically modified.

18. A carrier made of the waterborne biocompatible and biodegradable elastomer of claim 1, wherein the carrier is present in the form of microspherule, hydrogel, nanodispersion, nanodispersion-coated inorganic nanoparticle, foam, electrospinning fiber, or scaffold. 5

19. The carrier of claim 18, wherein the carrier is used for carrying a cell, a gene, or a drug.

20. The carrier of claim 18, wherein the carrier exhibits 10 electronegativity, amphiphilicity, and anticoagulant ability.

21. The waterborne biocompatible and biodegradable elastomer of claim 1, wherein the molar ratio of diisocyanate: soft segment: 2,2-bis(hydroxymethyl)propionic acid: chain extender of the product is 3.52:1:1:1.52. 15

* * * * *